

Configuration Guide (.ini/.ica File Reference)

**Citrix® ICA® Win32
Program Neighborhood Client**
Version 6.30

Information in this document is subject to change without notice. Companies, names, and data used in examples herein are fictitious unless otherwise noted. No part of this document may be reproduced or transmitted in any form or by any means, electronic or mechanical, for any purpose, without the express written permission of Citrix Systems, Inc.

Copyright © 2001-2002 Citrix Systems, Inc. All rights reserved.

Citrix, ICA (Independent Computing Architecture), Independent Management Architecture (IMA), Program Neighborhood, MetaFrame, MetaFrame XP, and NFuse are registered trademarks or trademarks of Citrix Systems, Inc. in the U.S.A. and other countries.

RSA Encryption © 1996-1997 RSA Security Inc., All Rights Reserved.

Microsoft, MS, MS-DOS, Windows, Windows NT, and Windows 2000 Servers are registered trademarks or trademarks of Microsoft Corporation in the U.S.A and other countries.

All other trademarks and registered trademarks are the property of their respective owners.

Last Updated: May 24, 2002 12:11 pm (MS)

Contents

Chapter 1 Before You Begin	11
How to Use this Guide	11
Document Conventions	12
Finding More Information	12
Citrix on the World Wide Web	13
Disclaimer	14
Providing Feedback About this Guide	14
Chapter 2 Introducing the ICA Client .ini and .ica Files	15
Overview	15
About the ICA Client .ini Files	15
Customizing Installer Set .ini Files	17
About .ica Files	18
Chapter 3 ICA Program Neighborhood Client .ini Files	19
.ini File Basic Structure	19
appsrv.ini	20
modem.ini	20
module.ini	21
pn.ini	22
wfclient.ini	22
wfcname.ini	22
wfcsetup.ini	23
filename.idx	23
filename.vl	23
ICA Client .ini File Precedence	24

Chapter 4 File Sections	25
<i>applicationservername</i>	25
ApplicationServers	25
<i>applicationsetname</i>	26
ClientComm	26
ClientPrinterQueue	26
Encoding	26
EncRC5-[.]	27
ICA 3.0	27
Modems	27
<i>modemdrivername</i>	27
Program Neighborhood	28
ProtocolDriver	28
<i>protocoldrivername</i>	28
<i>serverentryname</i>	28
ThinWire3.0	28
TransportDriver	29
<i>transportdrivername</i>	29
VirtualDriver	29
<i>virtualdrivername</i>	29
WFClient	30
WinStationDriver	30
<i>winstationdrivername</i>	30

Chapter 5 Parameters	31
[<i>Protocol</i>]BrowserAddress	32
AddICAIconOff	33
Address	34
AllowForeignIRQShare	34
ApplicationSetManagerIconOff	35
AudioBandwidthLimit	35
AutoLogonAllowed	36
AutoReconnect	36
BrowserProtocol	37
BrowserRetry	38
BrowserTimeout	38
BufferLength	38
CDMAAllowed	39
ClientAudio	39
ClientName	39
ColorMismatchPrompt_Have16K_Want256	40
ColorMismatchPrompt_Have16M_Want256	40
ColorMismatchPrompt_Have64M_Want256	40
COM1IOP	41
COM1IRQ	41
COM2IOP	41
COM2IRQ	42
COM3IOP	42
COM3IRQ	42
COM4IOP	43
COM4IRQ	43
COMAllowed	43
Compress	44
ConnectTTY	44
ConnectTTYDelay	45
ConnectType	45
CPMAllowed	46
CustomConnectionsIconOff	46
DefaultSoundType	46
DefaultVideoType	47

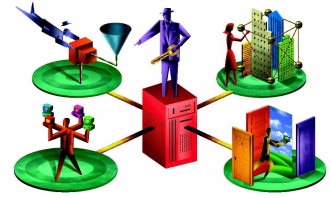
Description	47
DesiredColor	48
DesiredHRES	48
DesiredVRES	49
DesiredWinType	49
DisableCtrlAltDel	50
DisableSound	50
Domain	51
DoNotUseDefaultCSL	51
DosConnectTTY	52
DragoutOff	52
DriverName	52
DriverNameWin16	53
DriverNameWin32	53
EnableSSOnThruICAFile	53
Encrypt	54
EncryptionLevel	54
EncryptionLevelSession	55
FindNewApplicationSetIconOff	55
Hotkey[1, ..., 10]Char	56
HotKey[1, ..., 10]Shift	57
HowManySkipRedrawPerPaletteChange	57
HTTPBrowserAddress	57
ICAHttpBrowserAddress	57
ICAPortNumber	58
ICASOCKS[]	58
ICASOCKSProtocolVersion	58
ICASOCKSProxyHost	59
ICASOCKSProxyPortNumber	59
ICASOCKSrfc1929Password	59
ICASOCKSrfc1929UserName	60
ICASOCKSTimeout	60
IconIndex	60
IconPath	60
InitialProgram	61
InputEncoding	61
IPXBrowserAddress	61

KeyboardLayout	62
KeyboardTimer	62
KeyboardType	63
LanaNumber	63
Loc[<i>Protocol</i>]BrowserAddress	63
LocHTTPBrowserAddress	64
LocIPXBrowserAddress	64
LocNETBIOSBrowserAddress	64
LocTcpBrowserAddress	64
LogAppend	64
LogConnect	65
LogErrors	65
LogFile	65
LogFileGlobalPath	66
LogFileWin16	66
LogFileWin32	67
LogKeyboard	67
LogReceive	68
LogTransmit	68
LongCommandLine	68
MaximumCompression	69
MouseTimer	70
NameEnumerator	70
NameResolver	71
NETBIOSBrowserAddress	71
NoAutoDetectProtocol	72
NoDeskInt.	72
NoSavePwordOption	73
Password	73
PersistentCacheEnabled	74
PersistentCacheGlobalPath	74
PersistentCacheMinBitmap	75
PersistentCachePath	75
PersistentCachePercent	75
PersistentCacheSize	76
PingServer	76

PNCacheRefresh	76
PNCacheVersion	77
PNDefault	77
PNName	77
PNUIHeight	78
PNUIHPos	78
PNUINoAutoSearch	78
PNUIShowSB	79
PNUIShowTB	79
PNUIShowTBText	80
PNUIViewType	80
PNUIVPos	81
PNUIWidth	81
PreferTw1	81
ProtocolSupport	82
Proxy[]	83
ProxyAutoConfigURL	83
ProxyBypassList	83
ProxyHost	84
ProxyPassword	84
ProxyTimeout	84
ProxyType	85
ProxyUsername	86
Reducer	86
ReducerWin16	86
ReducerWin32	87
Reliable	87
RuntimePrompt	87
SavePNPassword	88
ScreenPercent	88
SecureChannelProtocol	88
serverentryname	89
SkipRedrawPerPaletteChange	89
SSLCACert[0,...,n]	89
SSLCiphers	89
SSLCommonName	90
SSLEnable	90

SSLNoCACerts	90
SSLProxyHost	91
SSOnCredentialType	91
SSOnUserSetting	92
SwapButtons	92
TCPBrowserAddress	92
TransportDriver	93
TW2CachePower	94
TWIMode	94
UIDomain	95
UpdatesAllowed	95
UseAlternateAddress	96
UseDefaultEncryption	97
UseDefaultSound	98
UseDefaultWinColor	98
UseDefaultWinSize	99
UseLocalUserAndPassword	99
Username	100
Version	100
VirtualDriver	101
VSLAllowed	101
WinStationDriver	102
winstationdrivername	102
XmlAddressResolutionType	102
ZLKeyboardMode	103
ZLMouseMode	104
Appendix A Citrix License Agreement	105

Before You Begin



This configuration guide is intended for Citrix ICA Client administrators who want to extend and customize the capabilities of the ICA Win32 Program Neighborhood Client. This document supplements the *ICA Win32 Client Administrator's Guide*.

How to Use this Guide

To get the most out of this Configuration Guide, review the table of contents to familiarize yourself with the topics discussed.

This guide contains the following sections:

Chapter	Contents
Chapter 1, "Before You Begin"	An overview of this document.
Chapter 2, "Introducing the ICA Client .ini and .ica Files"	An introduction to ICA Client .ini and .ica files.
Chapter 3, "File Sections"	A description of .ini/.ica file sections.
Chapter 4, "Parameters"	A comprehensive catalog of relevant parameters, including a description of keys and a list of supported values for each.
Chapter 5, "Citrix License Agreement"	

Document Conventions

The following conventional terms, text formats, and symbols are used throughout the printed documentation:

Convention	Meaning
Bold	Indicates column headings, command-line commands and options, dialog box titles, lists, menu names, tabs, and menu commands.
<i>Italics</i> , [<i>Italics</i>]	If an entire section or key name is variable, the entire name appears in italics. If part of a key name is variable, the variable part appears in italics and is enclosed in brackets []. The brackets are provided for easy reference only and must not be typed. You must provide the information in italics. Italics also indicate new terms and the titles of other books.
[<i>Italics</i>]	If part of a section name is a variable, the variable appears in italics and is enclosed by brackets []. The brackets are provided for easy reference only and must not be typed. You must provide the information in italics.
ALL UPPERCASE	Represents keyboard keys (for example, CTRL, ENTER, F2).
...(ellipsis)	Indicates that a command element can be repeated.
Monospace	Represents examples of screen text or entries that you might type at the command line or initialization files.
(vertical bar)	In a table cell, a separator between supported values that are equivalent. For example, 1 Yes On means you can type 1, or Yes, or On with equivalent results.
•	Indicates a list of related information, not procedural steps.

Finding More Information

For additional information about the topics included in this document, consult the following:

- The *Administrator's Guide for the Citrix ICA Win32 Clients* tells administrators how to install and configure the ICA Win32 Clients.
- The documentation included in your MetaFrame server package for instructions about installing, configuring, and maintaining your MetaFrame servers.

Important Always consult the Readme files for your MetaFrame server and the Citrix ICA Client for any last-minute updates, installation instructions, and corrections to the documentation.

Citrix on the World Wide Web

The Citrix Web site, at <http://www.citrix.com/>, offers a variety of information and services for Citrix customers and users. From the Citrix home page, you can access Citrix online Technical Support Services and other information designed to assist you, including the following:

- Downloadable Citrix ICA Clients (at <http://www.citrix.com/download>).
- Citrix Product Documentation Library, containing the latest documentation for all Citrix products (at <http://www.citrix.com/support>, select Product Documentation). You can download updated editions of the documentation that ships with Citrix products and supplemental documentation that may be available only from the Citrix Web site.
- Program information about Citrix Preferred Support Services options.
- An FTP server containing the latest service packs, hotfixes, utilities, and product literature for download.
- An online Solution Knowledge Base containing an extensive collection of application notes, technical articles, troubleshooting tips, and white papers.
- Interactive online Solution Forums for discussion of technical issues with other users.
- Frequently Asked Questions pages with answers to common technical and troubleshooting questions.
- Information about programs and courseware for Citrix training and certifications.
- Contact information for Citrix headquarters, including worldwide, European, Asia Pacific, and Japan headquarters.
- The Citrix Developer Network (CDN) at <http://www.citrix.com/cdn>. This open enrollment membership program provides access to developer tool kits, technical information, and test programs, for software and hardware vendors, system integrators, ICA licensees, and corporate IT developers who incorporate MetaFrame server-based computing solutions into their products.

Disclaimer

This documentation is provided to you, the licensed user, by Citrix Systems, Inc. (“Citrix”) pursuant to the terms of the Software Development Kit License Agreement included as Appendix A and may only be used in accordance with the express terms of the Software Development Kit License Agreement.

This document is provided “AS IS” and Citrix and its suppliers make and the licensed user receives no warranties or conditions, express, implied, statutory, or otherwise. Citrix has made reasonable efforts to ensure the completeness and accuracy of all information contained in this document.

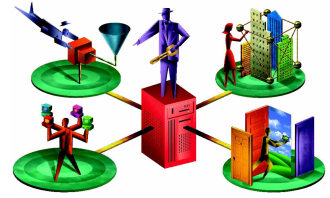
This document is subject to change without notice and Citrix is not obligated to maintain, update, or otherwise support such documentation.

Providing Feedback About this Guide

We strive to provide accurate, clear, complete, and usable documentation for Citrix products. If you have any comments, corrections, or suggestions for improving our documentation, we want to hear from you.

You can send email to the documentation authors at documentation@citrix.com. Please include the product name, version number, and the title of the document in your message.

Introducing the ICA Client .ini and .ica Files



Overview

The application settings of the Citrix ICA Win32 Program Neighborhood Client are controlled by a number of initialization (.ini) files. Aspects of application settings include connection properties, session properties, and user interface (UI) settings.

The ICA Win32 Web Client does not use .ini files. All connection properties for the Web Client are specified in .ica files.

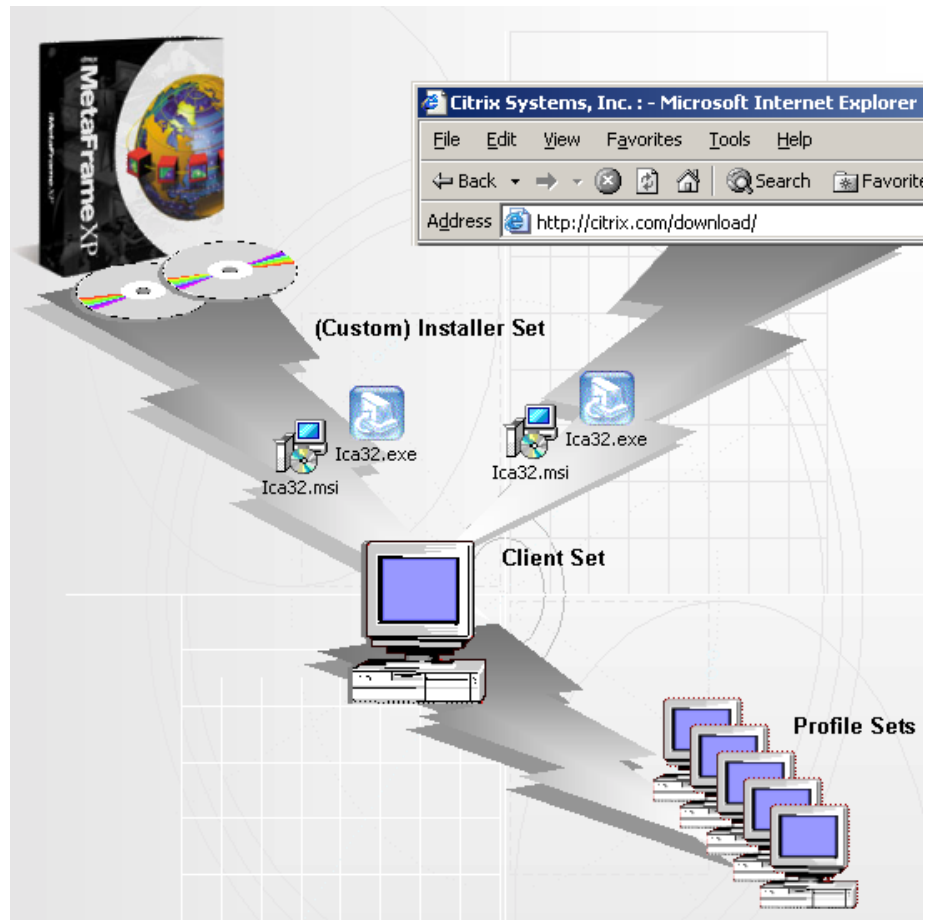
About the ICA Client .ini Files

The following .ini files are associated with the ICA Client:

- appsrv.ini
- modem.ini
- module.ini
- pn.ini
- wfclient.ini
- wfcname.ini
- wfcsetup.ini

See Chapter 3 for a detailed description of these files.

The ICA Client installer files (`ica32.msi`, `ica32.exe`) contain a set of source files (installer set). When you install the ICA Client on a given client device, a set of `.ini` files is created from the installer set and placed in the `C:\Program Files\Citrix\ICA Client` and other directories of the client device (client set). Finally, a set of `.ini` files is created from the client set and placed in the associated `%userprofile%\Application Data\ICAClient` directory when you add the ICA Client to a given user profile (profile set).



.ini File Genesis

The ICA Client reads and applies the settings configured in the `.ini` files when it starts up. Conversely, changes made to and from the client user interface (UI) by a given user are written to that user's profile set of `.ini` files and saved when the ICA Client exits, then read in again when the same user starts the ICA Client the next time.

The .ini files the ICA Client modifies are:

- appsrv.ini
- modem.ini
- wfclient.ini

The ICA Client does not modify module.ini, modem.ini, and wfcsetup.ini.

You can customize .ini file configurations at three levels:

- At the installer set level, prior to deploying the ICA Client to users
- At the client set level, after installing the ICA Client on a given client device but prior to adding it to user profiles
- At the profile set level, after adding the ICA Client to a given user profile

This document focuses on customizing .ini files at the installer set level.

▶ **To customize .ini files at the client set level**

Follow Step 4 of the following procedure, Customizing Installer Set .ini Files.

▶ **To customize .ini files at the profile set level**

Follow Step 4 of the following procedure, Customizing Installer Set .ini Files, but instead of modifying the client set, modify the profile set located in the *%userprofile%\Application Data\ICAClient* directory.

Customizing Installer Set .ini Files

Ini files are plain-text files, so you can view and modify them using any standard text editor.

To customize the installer set .ini files, you must create a custom ICA Client installer file that contains your custom set of .ini files. To do this, you must modify the applicable .ini files contained in the original ICA Client installer file (ica32.exe or ica32.msi). The original installer files are located on the Components CD included in your MetaFrame XP, Feature Release 2 media pack. You can also download them from the Citrix Web site at <http://www.citrix.com>.

You can create multiple custom installer sets with different properties as your needs require.

Note The ICA Client installer file is available in two different file formats, ica32.msi and ica32.exe. The relevant content of the two installer files is identical. The installer files differ in the mechanisms they use to install the ICA Client. See the *Citrix ICA Win32 Clients Administrator's Guide* for information about the difference between the two installer files and related system requirements.

► **To customize .ini files at the installer set level**

1. Obtain a copy of the appropriate ICA Client installer file.
2. Extract the contents of the installer file to a new folder, A.

Note You can use any standard compression utility to extract the contents of the installer file. However, you must use commercially available software to repackage the contents for distribution to users.

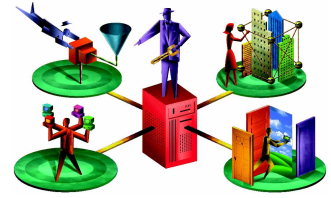
3. Install the ICA Client using the same installer file you used in Step 2.
4. After you install the client, modify the .ini files you want to customize. These files are located in the C:\Program Files\Citrix\ICA Client directory.
5. Save the modified .ini files to a new folder, B. Use the original filenames, but replace the .ini file extensions with .src (source) extensions.
6. Replace all .src files in folder A with their modified equivalents from folder B. The contents of folder A now represent your custom installer set of .ini files.
7. Repackage the contents of folder A for distribution to users.

About .ica Files

The ICA Win32 Web Client and ICA Win32 Program Neighborhood Agent use .ica files in place of .ini files. When publishing resources for the ICA Web Client and the ICA Program Neighborhood Agent, you use the Create ICA File wizard to create the associated .ica files.

.Ica files support the same section and name/value pair conventions as appsrv.ini. If you need additional information about .ica files, see the Citrix Knowledgebase at <http://knowledgebase.citrix.com/>.

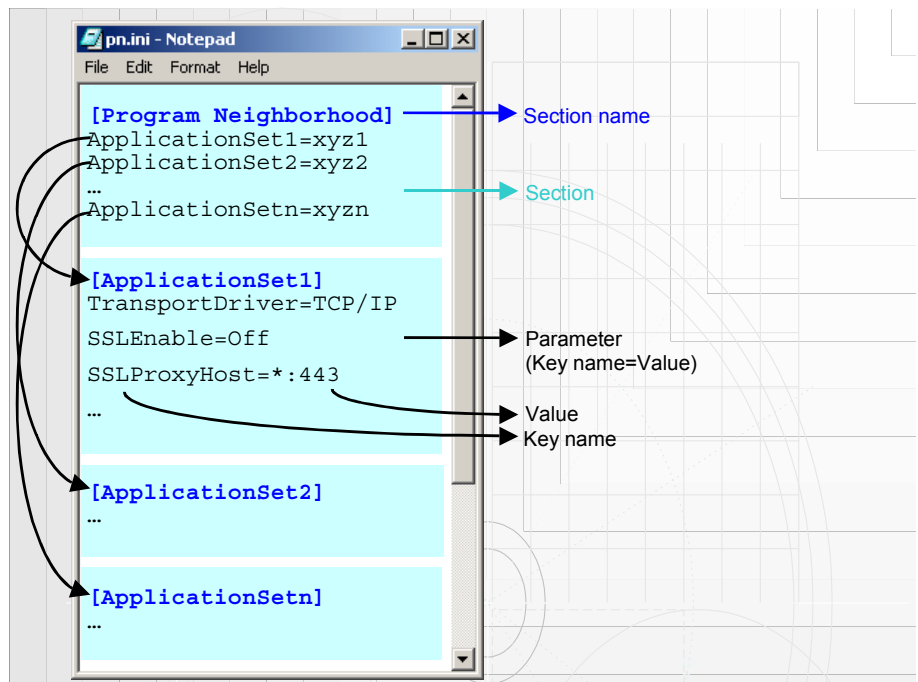
ICA Program Neighborhood Client .ini Files



This chapter describes the configuration files associated with the ICA Program Neighborhood Client.

.ini File Basic Structure

.Ini files adhere to a mandatory file structure that consists of one or several [Sections] that may contain one or several parameters describing each section:



Sample .ini file

appsrv.ini

Describes each custom ICA connection and user interface settings.

Locations:

C:\Program Files\Citrix\ICA Client (client master file); %userprofile%\Application Data\ICAClient

Section	Description
WFClient	Describes connection and session properties that serve as defaults for all custom ICA connections. Also describes user interface settings.
ApplicationServers	Lists all defined custom ICA connections; no published application sets. Each custom ICA connection in the list has an associated applicationservername section by the same name as its key name.
applicationservername	Describes the connection and session properties of the associated custom ICA connection, including overrides, if any, of defaults defined in WFClient .

modem.ini

Describes each defined modem and its initialization string.

Locations:

C:\WFCLIENT;

C:\Program Files\Citrix\ICA Client

Section	Description
Modems	Lists all supported modem drivers. Each modem driver in the list has an associated modemdrivename section by the same name as its key name.
modemdrivename	Describes the associated modem driver, including initialization strings.

module.ini

Contains a comprehensive list of the parameters used to select and configure the communications stack modules. Most parameters in this file are defaults. Equivalent entries in appsrv.ini override the settings in this file.

Locations:

C:\WFCLIENT;

C:\Program Files\Citrix\ICA Client

Section	Description
TransportDriver	Lists all supported transport drivers. Each transport driver in the list has an associated transportdrivename section by the same name as its key name. Transport drivers manage the communications connection.
ProtocolDriver	Lists all supported protocol drivers. Each protocol driver in the list has an associated protocoldrivename section by the same name as its key name. Protocol drivers manage the intermediate data stream filters.
WinStationDriver	Lists all supported WinStation drivers. Each WinStation driver in the list has an associated winstationdrivename section by the same name as its key name. WinStation drivers manage the presentation data stream
VirtualDriver	Lists all supported virtual drivers. Each virtual driver in the list has an associated virtualdrivename section by the same name as its key name. Virtual drivers manage the ICA protocol extensions.
transportdrivename	Describes the associated transport driver.
protocoldrivename	Describes the associated protocol driver.
winstationdrivename	Describes the associated WinStation driver.
virtualdrivename	Describes the associated virtual driver.

These modules are loaded in order, depending on user configuration and required stack relationships.

pn.ini

Describes each defined application set.

Locations:

C:\Program Files\Citrix\ICA Client (client master file); %userprofile%\Application Data\ICAClient (profile set)

Section	Description
Program Neighborhood	Lists all defined published application sets; no custom ICA connections. Each application set in the list has an associated applicationsetname section by the same name as its key name.
WFClient	Describes connection and session properties that serve as defaults for all application sets.
applicationsetname	Describes the connection and session properties of the associated application set., including overrides, if any, of defaults defined in WFClient .

wfclient.ini

Describes properties of the client device.

Locations:

C:\Program Files\Citrix\ICA Client (client master file); %userprofile%\Application Data\ICAClient (profile set)

wfcname.ini

Contains a single entry describing the name of the client device.

Location:

C:\ (client root directory)

Note ICA Clients prior to Version 6.30 store the client name in the **WFClient** section of **wfcname.ini**. As of Version 6.30, ICA Clients retrieve the client name from the system registry instead. Any ClientName setting in **wfcname.ini** is used only for the purpose of migrating the client name to the registry during client install; for example, when upgrading from or auto-updating a pre-V. 6.30 ICA Client.

wfcsetup.ini

Used by Setup. This file contains no user modifiable entries.

Locations:

C:\WFCLIENT;

C:\Program Files\Citrix\ICA Client

Note Do not edit this file.

filename.idx

Index file for a particular application set. The filename corresponds to the value of the associated application set name in pn.ini. This file contains no user modifiable entries.

Location:

%userprofile%\Application Data\ICAClient

Note Do not edit this file.

filename.vl

Data file for a particular application set. The filename corresponds to the value of the associated application set name in pn.ini. This file contains no user modifiable entries.

Location:

%userprofile%\Application Data\ICAClient

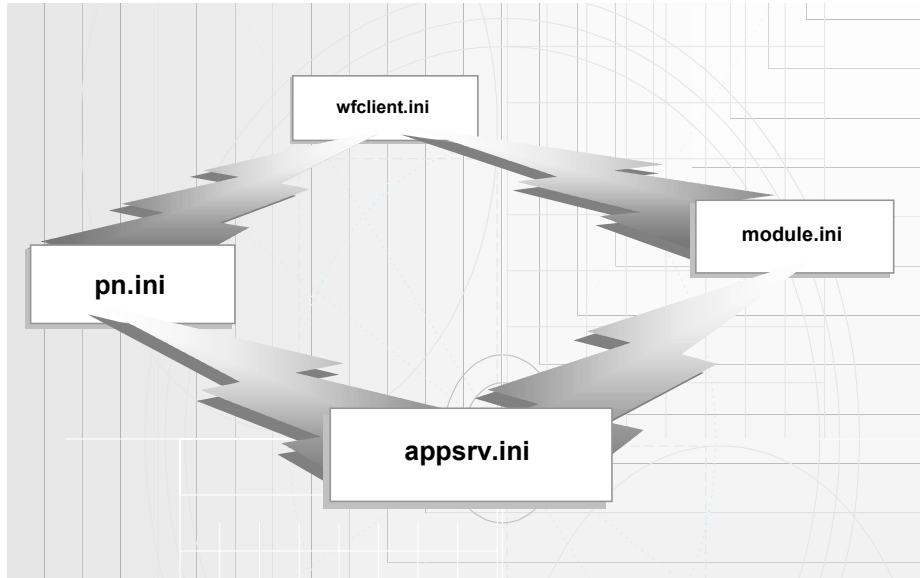
This file contains a database of applications that are in the published application set. It specifies which of the published applications on the associated server to include in the published application set.

Note Do not edit this file.

ICA Client .ini File Precedence

The ICA Client directly modifies the .ini files located in the *%userprofile%\Application Data\ICA Client* directories: *appsrv.ini*, *pn.ini*, *wfclient.ini*. During Setup, the client also writes to *wfcname.ini*. It does not modify *module.ini*, *modem.ini*, and *wfcsetup.ini*.

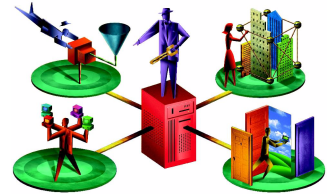
The following diagram illustrates precedence among the ICA Client .ini files:



ICA Client .ini File Precedence

The settings in *wfclient.ini* are the default settings for the ICA Client. They are overridden if the same entries appear in *pn.ini* or *appsrv.ini*. The settings in *pn.ini* are the default settings for each application set. They are overridden by settings in *appsrv.ini*. *Appsrv.ini* contains the default settings for connections. Settings in *appsrv.ini* override settings in *pn.ini* and *module.ini*.

File Sections



Section names in *italics* are variable.

applicationservername

This section was previously documented by the name of *serverentryname*.

File	appsrv.ini
Platform	WinDOS

Contains the settings for a particular custom ICA connection. Its name is equal to an entry in the **ApplicationServers** section.

The following parameters are required to successfully establish a custom ICA connection: **TransportDriver**, **Address**, **WinStationDriver**, **DesiredColor**, **DesiredWinType**, **DesiredHRES**, and **DesiredVRES**.

ApplicationServers

File	appsrv.ini
Platform	Win32

A list of all defined custom ICA connections. Each defined custom ICA connection has a corresponding *applicationservername* section to describe its settings.

applicationsetname

File	pn.ini
Platform	Win32

Contains the settings for a particular published application set. Its name is equal to an entry in the **Program Neighborhood** section.

ClientComm

File	module.ini
Platform	WinDOS

This virtual driver is responsible for providing client COM port access to supplement the ICA 3.0 driver.

ClientPrinterQueue

File	module.ini
Platform	Win32

Client printer mapping virtual driver.

Encoding

File	.ica files
Platform	Win32, Win16

Describes the encoding type of the .ica file.

EncRC5-[]

This paragraph covers the following sections:

- EncRc5-0
- EncRC5-40
- EncRC5-56
- EncRC5-128

File	module.ini, template.ica
Platform	WinDOS

Each section lists the encryption protocol driver to load for the associated encryption level.

ICA 3.0

File	module.ini
Platform	WinDOS

Describes the ICA 3.0 *winstationdrivername*.

Modems

File	modem.ini
Platform	WinDos

A list of all supported modems.

modemdrivername

File	modem.ini
Platform	WinDos

A description of each supported modem driver, including initialization strings.

Program Neighborhood

File	pn.ini
Platform	Win32

A list of all defined published application sets. Each defined published application set has a corresponding *applicationsetname* section to describe its settings.

ProtocolDriver

File	module.ini
Platform	WinDOS

Lists all supported protocol driver names. Each name has an associated section.

protocoldrivername

File	module.ini
Platform	WinDOS

Contains settings specific to the individual protocol driver.

serverentryname

See “applicationservername” on page 25.

ThinWire3.0

File	module.ini, wfclient.ini
Platform	WinDOS

This virtual driver is responsible for the graphics support to supplement the ICA 3.0 driver.

TransportDriver

File	module.ini
Platform	WinDOS

Lists all supported transport driver names. Each name has an associated section.

transportdrivername

File	module.ini
Platform	WinDOS

The transport driver uses this section. For each transport driver, there is a section; for example, “TCP/IP-FTP” is the label for the section used by the FTP Software TCP/IP transport driver.

VirtualDriver

File	module.ini
Platform	Win

List all virtual drivers responsible for additional functions not provided by the base WinStation drivers.

virtualdrivername

File	module.ini
Platform	Win

Sections describing each virtual driver. See the **VirtualDriver** key description for a list of supported virtual drivers.

WFClient

File	appsrv.ini, wfclient.ini
Platform	WinDOS

The ICA Client engine uses this section. It contains default session-oriented parameters.

WinStationDriver

File	module.ini
Platform	WinDOS

A list of all supported WinStation driver names.

Note “ICA 3.0” is the only supported driver name for this section.

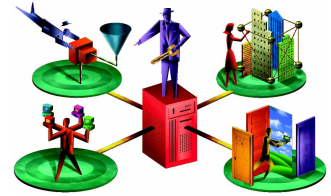
“ICA 3.0” has a corresponding *winstationdrivername* section to describe its settings.

winstationdrivername

File	module.ini
Platform	WinDOS

Contains the settings for “ICA 3.0.” “ICA 3.0” is the only supported name for this section.

Parameters



This chapter describes a collection of relevant `.ini/.ica` file parameters.

This chapter lists, in alphabetical order, a catalog of relevant key names. Each key name is accompanied by:

- Value type information
- A list of default and supported values
- A list of ICA Client platforms that recognize and support the key
- A list of sections that can list the key
- Information about corresponding UI elements where applicable

Variables appear in *italics*. If an entire section name is variable, the entire section name appears in italics. If part of a section name is a variable, only the variable appears in italics and is enclosed in brackets []. The brackets are provided for easy reference only and must not be typed. You must provide the information in italics.

A given `.ini/.ica` file may not contain some of the parameters described here. In turn, you may find parameters in an `.ini/.ica` file that are not described here.

Note Boolean parameters use No, False, Off, off, or 0 to indicate FALSE and Yes, True, On, on, or 1 to indicate TRUE.

Spaces are significant and values are case-sensitive for all parameters.

[Protocol]BrowserAddress, Loc[Protocol]BrowserAddress

This section covers the following parameters:

- HTTPBrowserAddress
- IPXBrowserAddress
- NETBIOSBrowserAddress
- TCPBrowserAddress
- LocHTTPBrowserAddress
- LocIPXBrowserAddress
- LocNETBIOSBrowserAddress
- LocTCPBrowserAddress

Value Type	String
Default Value	None
Supported Values	Any valid server name or address
Platforms	Win32, Win16, WinCE
	<p>Note Win16 does not support HTTPBrowserAddress and LocHTTPBrowserAddress.</p>
Sections	<p>All [Protocol]BrowserAddress settings: WFClient for all custom ICA connections unless otherwise overridden <i>applicationsetname</i> for each applicable published application set</p> <p>All Loc[Protocol]BrowserAddress settings: <i>applicationservername</i> for each custom ICA connection</p> <p>Note Published application sets do not use Loc[Protocol]BrowserAddress</p>
Corresponding UI Element	<p>For <i>applicationsetname</i>: Settings dialog box > Connection tab > Server Location > Network Protocol</p> <p>For <i>applicationservername</i>: Properties dialog box > Connection tab > Server Location > Network Protocol</p>

These parameters specify the location of the ICA Browser used in conjunction with the particular network protocol specified for ICA browsing in **BrowserProtocol**.

If the value of BrowserProtocol is...	... then the parameter used to locate the ICA Browser is:
UDP	TCPBrowserAddress or LocTCPBrowserAddress
HTTPonTCP	HTTPBrowserAddress or LocHTTPBrowserAddress
IPX	IPXBrowserAddress or LocIPXBrowserAddress
SPX	IPXBrowserAddress or LocIPXBrowserAddress
NETBIOS	NETBIOSBrowserAddress or LocNETBIOSBrowserAddress

Whether **[Protocol]BrowserAddress** or **Loc[Protocol]BrowserAddress** is used depends on the value of **DoNotUseDefaultCSL**:

If the value of DoNotUseDefaultCSL is...	... then the parameter used to locate the ICA Browser is:
FALSE (default)	[Protocol]BrowserAddress
TRUE	Loc[Protocol]BrowserAddress (overriding any existing [Protocol]BrowserAddress settings)

AddICAIconOff

Value Type	Boolean
Default Value	Off
Supported Values	On Off
Platforms	PN
Sections	WFClient
Corresponding UI Element	Program Neighborhood window > Custom ICA connections window > Add ICA Connection icon

Specifies whether (Off) or not (On) to display the Add ICA Connection icon.

Address

Value Type	String
Default Value	N/A
Supported Values	N/A
Platforms	PN, WinDOS
Sections	<i>applicationservername</i>
Corresponding UI Element	Properties dialog box > Connection tab > Server text box

Specifies the address of the target server. For TCP/IP connections, this can be the DNS name of a MetaFrame server, the IP address of a MetaFrame server, or the name of a published application. For IPX, SPX, and NetBIOS connections, it can be the name of a MetaFrame server or the name of a published application.

Note .ica files must have this key specified.

AllowForeignIRQShare

Value Type	Boolean
Default Value	No
Supported Values	Yes No
Platforms	DOS32
Sections	ClientComm

Allows (Yes) the ICA DOS32 Client to share an IRQ number with a driver or TSR (Terminate and Stay Resident program). The driver or TSR must be well-behaved and must be installed first so that the DOS32 Client can chain the interrupt to the third party (foreign) driver.

ApplicationSetManagerIconOff

Value Type	Boolean
Default Value	Off
Supported Values	On Off
Platforms	PN
Sections	WFClient
Corresponding UI Element	Program Neighborhood window

Specifies whether (Off) or not (On) to display the Application Set Manager icon.

AudioBandwidthLimit

Value Type	Integer [0-2]
Default Value	1 (network connections) 2 (serial connections)
Supported Values	0 1 2
Platforms	PN, WinDOS
Sections	<i>applicationsetname</i> (PN) <i>applicationservername</i> (WinDOS)
Corresponding UI Element	For <i>applicationsetname</i> : Settings dialog box > Options tab > sound quality menu For <i>applicationservername</i> : Properties dialog box > Default Options tab > sound quality menu

Specifies the audio bandwidth limit and, by extension, the audio quality for the connection. Higher audio quality requires more bandwidth.

List of supported values:

- 0 - high - 1.4 megabits per second (Mbps)
- 1 - medium - 64 kilobits per second (Kbps)
- 2 - low - 4 Kbps

AutoLogonAllowed

Value Type	Boolean
Default Value	Off
Supported Values	On Off
Platforms	WinDOS
Sections	WFClient

Specifies whether (Off) or not (On) to require users to enter their user name, domain name, and password when connecting using encryption levels greater than Basic. By default, users are required to enter this information, even if it is present in appsrv.ini.

AutoReconnect

Value Type	Boolean
Default Value	Off
Supported Values	On Off
Platforms	Win32
Sections	WFClient

Specifies whether or not the ICA Client automatically attempts to reconnect if the connection is dropped. This is usually used for dial-in connections.

BrowserProtocol

Value Type	String
Default Value	see following table
Supported Values	UDP HTTPonTCP IPX SPX NETBIOS
Platforms	Win32, Win16, WinCE
Sections	<i>applicationsetname</i> <i>applicationservername</i>
Corresponding UI Element	For <i>applicationsetname</i> : Settings dialog box > Connection tab > Server Location > Network Protocol For <i>applicationservername</i> : Properties dialog box > Connection tab > Server Location > Network Protocol

In combination with **TransportDriver**, this parameter corresponds to the **Network Protocol** option:

BrowserProtocol specifies the network protocol used for ICA *browsing*.

TransportDriver specifies the network protocol used for ICA *connections*.

Name of Network Protocol in Program Neighborhood User Interface	Corresponding value of TransportDriver	Corresponding value of BrowserProtocol
TCP/IP	TCP/IP	UDP
TCP/IP+HTTP	TCP/IP	HTTPonTCP
IPX	IPX	IPX
SPX	SPX	SPX
NETBIOS	NETBIOS	NETBIOS
SSL/TLS+HTTPS	TCP/IP	HTTPonTCP

Note SSL/TLS+HTTPS network protocol also requires **SSLEnable=On**.

BrowserRetry

Value Type	Integer
Default Value	3
Platforms	WinDOS
Sections	WFClient

Specifies the number of times the ICA Client device will resubmit an ICA Master Browser request that has timed out.

BrowserTimeout

Value Type	Integer
Default Value	1000
Platforms	WinDOS
Sections	WFClient

Specifies the number of milliseconds the ICA Client will wait for a response after making a request to the ICA Master Browser.

BufferLength

Value Type	Integer
Default Value	2048
Platforms	WinDOS
Sections	<i>winstationdrivename</i>

Specifies the input buffer length in bytes.

CDMAllowed

Value Type	Boolean
Default Value	On
Supported Values	On Off
Platforms	WinDOS
Sections	WFClient

Specifies whether or not to allow client drive mapping.

ClientAudio

Value Type	Boolean
Default Value	Off
Supported Values	On Off
Platforms	PN, WinDOS
Sections	<i>applicationsetname</i> (PN) <i>applicationservername</i> (WinDOS)

Specifies whether (On) or not (Off) to enable client audio mapping.

ClientName

Value Type	String
Default Value	Chosen, in order, from registry setting, machine name, time stamp
Supported Values	Any characters in excess of 20 are truncated
Platforms	Win32, Win16
Sections	WFClient (.ica files only)

ICA Clients prior to Version 6.30 store the client name in the [WFClient] section of **wfcname.ini**. As of Version 6.30, ICA Clients retrieve the client name from the system registry instead. Any ClientName setting in **wfcname.ini** is used only for the purpose of migrating the client name to the registry during client install; for example, when upgrading from or auto-updating a pre-Version 6.30 ICA Client.

The **ClientName** setting in the .ica file overrides the default way of retrieving the client name as described in **Default Value** above.

ColorMismatchPrompt_Have16K_Want256

Value Type	Boolean
Default Value	Off
Supported Values	On Off
Platforms	WinDOS
Sections	WFClient

Controls whether (On) or not (Off) to display a warning if the client device's color depth is 16 colors and the connection configuration is for 256 colors. Not implemented in Program Neighborhood Client.

ColorMismatchPrompt_Have16M_Want256

Value Type	Boolean
Default Value	Off
Supported Values	On Off
Platforms	WinDOS
Sections	WFClient

Controls whether (On) or not (Off) to display a warning if the client device's color depth is high color (16-bit) and the connection configuration is for 256 colors. Not implemented in Program Neighborhood Client.

ColorMismatchPrompt_Have64M_Want256

Value Type	Boolean
Default Value	Off
Supported Values	On Off
Platforms	WinDOS
Sections	WFClient

Controls whether (On) or not (Off) to display a warning if the client device's color depth is true color (32-bit) and the connection configuration is for 256 colors. Not implemented in Program Neighborhood Client.

COM1IOP

Value Type	String
Default Value	0x3f8
Platforms	DOS32
Sections	ClientComm

Specifies the I/O communication address for non-standard COM1 ports. If misconfigured, reboot the client device.

COM1IRQ

Value Type	Integer
Default Value	4
Platforms	DOS32
Sections	ClientComm

Specifies the IRQ number for non-standard COM1 ports. If misconfigured, reboot the client device.

COM2IOP

Value Type	String
Default Value	0x2f8
Platforms	DOS32
Sections	ClientComm

Specifies the I/O communication address for non-standard COM2 ports. If misconfigured, reboot the client device.

COM2IRQ

Value Type	Integer
Default Value	3
Platforms	DOS32
Sections	ClientComm

Specifies the IRQ number for non-standard COM2 ports. If misconfigured, reboot the client device.

COM3IOP

Value Type	String
Default Value	0x3e8
Platforms	DOS32
Sections	ClientComm

Specifies the I/O communication address for non-standard COM3 ports. If misconfigured, reboot the client device.

COM3IRQ

Value Type	Integer
Default Value	4
Platforms	DOS32
Sections	ClientComm

Specifies the IRQ number for non-standard COM3 ports. If misconfigured, reboot the client device.

COM4IOP

Value Type	String
Default Value	0x2e8
Platforms	DOS32
Sections	ClientComm

Specifies the I/O communication address for non-standard COM4 ports. If misconfigured, reboot the client device.

COM4IRQ

Value Type	Integer
Default Value	3
Platforms	DOS32
Sections	ClientComm

Specifies the IRQ number for non-standard COM4 ports. If misconfigured, reboot the client device.

COMAllowed

Value Type	Boolean
Default Value	On
Supported Values	On Off
Platforms	WinDOS
Sections	WFClient

Specifies whether (On) or not (Off) COM port mapping is permitted.

Compress

Value Type	Boolean
Default Value	Off
Supported Values	On Off
Platforms	PN, WinDOS
Sections	<i>applicationsetname</i> (PN) <i>transportdrivename</i> (WinDOS)
Corresponding UI Element	For <i>applicationsetname</i> : Settings dialog box > Default Options tab > Use data compression option For <i>applicationservername</i> : Properties dialog box > Options tab > Use data compression option

Specifies the flag associated with the compress protocol driver. If this is set to On, and Compress is in the **ProtocolSupport** list, the compression protocol driver is loaded.

ConnectTTY

Value Type	Boolean
Default Value	Off
Supported Values	On Off
Platforms	Win
Sections	<i>WFClient</i> <i>winstationdrivename</i>

Warning Fixed value. Do not change.

ConnectTTYDelay

Value Type	Integer
Default Value	1000
Platforms	WinDOS
Sections	WFClient <i>winstationdrivername</i>

Warning Fixed value. Do not change.

ConnectType

Value Type	Integer
Default Value	1
Supported Values	1 2 3 4
Platforms	PN, WinDOS
Sections	<i>applicationsetname</i> (PN) <i>applicationservername</i> (WinDOS)

Specifies the connection type to be used.

List of supported values:

- 1 = LAN
- 2 = WAN
- 3 = PPP
- 4 = Dial-Up

CPMAllowed

Value Type	Boolean
Default Value	On
Supported Values	On Off
Platforms	WinDOS
Sections	WFClient

Specifies whether (On) or not (Off) printer port mapping is allowed.

CustomConnectionsIconOff

Value Type	Boolean
Default Value	Off
Supported Values	On Off
Platforms	PN
Sections	WFClient
Corresponding UI Element	Program Neighborhood window > Custom ICA Connections icon

Specifies whether (Off) or not (On) to display the Custom ICA Connections icon.

DefaultSoundType

Value Type	Integer
Default Value	1
Platforms	PN
Sections	<i>applicationsetname</i> (PN) <i>applicationservername</i> (WinDOS)

Warning Fixed value. Do not change.

DefaultVideoType

Value Type	Boolean
Default Value	N/A
Platforms	PN
Sections	<i>applicationsetname</i> (PN) <i>applicationservername</i> (WinDOS)

Warning Fixed value. Do not change.

Description

Value Type	String
Default Value	N/A
Supported Values	Non-empty strings
Platforms	Win32
Sections	<i>applicationservername</i>

The Program Neighborhood Client creates this parameter for each custom ICA connection. The value matches the name of the custom ICA connection as it appears in the Program Neighborhood user interface and in the *applicationservername* section of appsrv.ini.

DesiredColor

Value Type	Integer
Default Value	1
Supported Values	1 2 4 8
Platforms	PN, WinDOS
Sections	<i>applicationsetname</i> (PN) <i>applicationservername</i> (WinDOS)
Corresponding UI Element	For <i>applicationsetname</i> : Settings dialog box > Default Options tab > Window Properties > Window Colors menu For <i>applicationservername</i> : Properties dialog box > Options tab > Window Properties > Window Colors menu

Specifies the color depth of the ICA session.

List of supported values:

- 1 - 16 colors
- 2 - 256 colors
- 4 - high color
- 8 - true color

DesiredHRES

Value Type	Integer
Default Value	640
Platforms	PN, WinDOS
Sections	<i>applicationsetname</i> (PN) <i>applicationservername</i> (WinDOS)
Corresponding UI Element	For <i>applicationsetname</i> : Settings dialog box > Default Options tab > Window Size ("Custom") > Width text box For <i>applicationservername</i> : Properties dialog box > Options tab > Window Size ("Custom") > Width text box

Specifies the horizontal window size, in pixels, if the value of **DesiredWinType** is 5 (Custom).

DesiredVRES

Value Type	Integer
Default Value	480
Platforms	PN, WinDOS
Sections	<i>applicationsetname</i> (PN) <i>applicationservername</i> (WinDOS)
Corresponding UI Element	For <i>applicationsetname</i> : Settings dialog box > Default Options tab > Window Size ("Custom") > Height text box For <i>applicationservername</i> : Properties dialog box > Options tab > Window Size ("Custom") > Height text box

Specifies the vertical window size, in pixels, if the value of **DesiredWinType** is 5 (Custom). If the value of **DesiredWinType** is 8 (Seamless), the value must be 4294967295.

DesiredWinType

Value Type	Integer
Default Value	0
Supported Values	0 1 2 3 4 5 6 7 8
	Note A value of "8" (Seamless) requires DesiredVRES =4294967295.
Platforms	PN, WinDOS
Sections	<i>applicationsetname</i> (PN) <i>applicationservername</i> (WinDOS)
Corresponding UI Element	For <i>applicationsetname</i> : Settings dialog box > Default Options tab > Window Size menu For <i>applicationservername</i> : Properties dialog box > Options tab > Window Size menu

Specifies the default desired window size for custom connections.

List of supported values:

- 0 - Inherit the default setting from wfclient.ini. This value is not supported in wfclient.ini.
- 1 - 640x480
- 2 - 800x600
- 3 - 1024x768
- 4 - 1280x1024
- 5 - Custom size defined by **DesiredHRES** and **DesiredVRES**
- 6 - Percent
- 7 - Full screen
- 8 - Seamless

DisableCtrlAltDel

Value Type	Boolean
Default Value	On
Supported Values	On Off
Platforms	WinDOS
Sections	WFClient

Enables (Off) or disables (On) the Ctrl+Alt+Del key combination within the ICA session to prevent users from shutting down the MetaFrame server.

DisableSound

Value Type	Boolean
Default Value	Off
Supported Values	On Off
Platforms	WinDOS
Sections	WFClient

Disables Windows alert sounds (the Windows “Asterisk” event). If client audio mapping is disabled with the **ClientAudio** parameter, this setting has no effect.

Domain

Value Type	String
Default Value	None
Platforms	WinDOS
Sections	<i>applicationservername</i>
Corresponding UI Element	Properties dialog box > Logon Information tab > User-specified credentials option > Password text box

Specifies the domain name to use when refreshing the associated *custom ICA connection*. See **UIDomain** for information about passwords for *published application sets*.

DoNotUseDefaultCSL

Value Type	Boolean
Default Value	Off
Supported Values	On Off
Platforms	Win32, Win16, WinCE
Sections	<i>applicationservername</i>
Corresponding UI Element	Properties dialog box > Connection tab > Server Location > Use Custom Default option

Selects (Off) or clears (On) the **Use Custom Default** option. This option determines which parameter is used to locate the ICA Browser used in conjunction with the particular network protocol specified for ICA browsing in **BrowserProtocol**:

If the value of DoNotUseDefaultCSL is...	... then the parameter used to locate the ICA Browser is:
FALSE (default)	[Protocol]BrowserAddress
TRUE	Loc[Protocol]BrowserAddress (overriding any existing [Protocol]BrowserAddress settings)

See **[Protocol]BrowserAddress** for additional information.

DosConnectTTY

Value Type	Boolean
Default Value	On
Supported Values	On Off
Platforms	DOS
Sections	WFClient

Specifies whether (On) or not (Off) to echo data during the connect phase. This allows you to use TTY emulation to get through dial-up network devices that may include third-party products such as security devices and X.25 PADs.

DragoutOff

Value Type	Boolean
Default Value	Off
Supported Values	On Off
Platforms	PN
Sections	WFClient

Specifies whether (Off) or not (On) users can drag-and-drop connection icons to create shortcuts anywhere on their client device.

DriverName

Value Type	File name
Default Value	None
Platforms	DOS
Sections	<i>protocoldrivername</i> <i>transportdrivername</i> <i>winstationdrivername</i>

Specifies the name of the DOS **ProtocolDriver**, **TransportDriver**, or **WinStationDriver** file to load.

DriverNameWin16

Value Type	File name
Default Value	None
Platforms	Win16
Sections	<i>protocoldrivername</i> <i>transportdrivername</i> <i>winstationdrivername</i>

Specifies the name of the Win16 **ProtocolDriver**, **TransportDriver**, or **WinStationDriver** file to load.

DriverNameWin32

Value Type	File name
Default Value	None
Platforms	Win32
Sections	<i>protocoldrivername</i> <i>transportdrivername</i> <i>winstationdrivername</i>

Specifies the name of the Win32 **ProtocolDriver**, **TransportDriver**, or **WinStationDriver** file to load.

EnableSSOnThruCAFile

Value Type	Boolean
Default Value	Off
Supported Values	On Off
Platforms	PN
Sections	WFClient

Specifies whether (On) or not (Off) to use the same user name and password the user used to log on to the client device for authentication through .ica files.

For security reasons, users cannot be authenticated to the server unless this parameter is present and its value set to On, even if **UseLocalUserAndPassword** and **SSOnUserSetting** are specified in the .ica file.

Related Parameters: **UseLocalUserAndPassword**, **SSOnUserSetting**

Encrypt

Value Type	Boolean
Default Value	On
Supported Values	On Off
Platforms	WinDOS
Sections	<i>transportdrivername</i>

If this parameter is set to On, and Encrypt is in the **ProtocolSupport** list, the encryption protocol driver is loaded.

EncryptionLevel

Value Type	Integer
Default Value	1
Supported Values	1 2 3 4 5
Platforms	Win32
Sections	WFClient for all custom ICA connections unless otherwise overridden applicationservername for each custom ICA connection where UseDefaultEncryption=Off

Specifies the encryption level of the custom ICA connection. Supported by Program Neighborhood Client only, and for custom ICA connections only.

List of supported values:

- 1 - Basic
- 2 - RC5 128-bit only while logging on
- 3 - RC5 40-bit
- 4 - RC5 56-bit
- 5 - RC5 128-bit

EncryptionLevelSession

Value Type	Integer
Default Value	1
Supported Values	1 2 3 4 5
Platforms	Win32, Win16, WinCE
Sections	<p>WFClient for all custom ICA connections unless otherwise overridden</p> <p>applicationservername for each custom ICA connection where UseDefaultEncryption=Off</p> <p>applicationsetname for each published application set where UseDefaultEncryption=Off</p>

Specifies the encryption level of the ICA connection.

List of supported values:

- 1 - Basic
- 2 - RC5 128-bit only while logging on
- 3 - RC5 40-bit
- 4 - RC5 56-bit
- 5 - RC5 128-bit

FindNewApplicationSetIconOff

Value Type	Boolean
Default Value	Off
Supported Values	On Off
Platforms	PN
Sections	WFClient
Corresponding UI Element	Program Neighborhood window > Find New Application Set icon

Specifies whether (On) or not (Off) to display the Find New Application Set icon.

Hotkey[1,...,10]Char

Value Type	String
Default Value	N/A
Supported Values	(none) F1 F2 F3 F4 F5 F6 F7 F8 F9 F10 F11 F12 Esc minus plus star tab
Platforms	WinDOS
Sections	WFClient
Corresponding UI Element	ICA Settings dialog box > Hotkeys tab > right menu column

Specifies the keys to use for mapping the various hotkey sequences. Each action is defined by a combination of a character and a shift state. To disable a particular hotkey, set both its character and shift state parameters to (none).

The hotkey numbers correspond to the following actions:

- Hotkey1 - Task List
- Hotkey2 - Close Remote Application
- Hotkey3 - Toggle Title Bar
- Hotkey4 - CTRL-ALT-DEL
- Hotkey5 - CTRL-ESC
- Hotkey6 - ALT-ESC
- Hotkey7 - ALT-TAB
- Hotkey8 - ALT-BACKTAB
- Hotkey9 - CTRL-SHIFT-ESC
- Hotkey10 - Toggle Latency Reduction

Related parameter: **HotKey[1,...,10]Shift**

HotKey[1,...,10]Shift

Value Type	String
Default Value	N/A
Supported Values	(none) Shift Ctrl Alt
Platforms	WinDOS
Sections	WFClient
Corresponding UI Element	ICA Settings dialog box > Hotkeys tab > left menu column

Along with **Hotkey[1,...,10]Char**, specifies the key combinations to use for the various hotkey sequences.

HowManySkipRedrawPerPaletteChange

Value Type	Integer
Default Value	9
Platforms	WinDOS
Sections	WFClient

Specifies the number of consecutive redraw requests to skip before redrawing the screen. See **SkipRedrawPerPaletteChange** for more information.

HTTPBrowserAddress

See “[Protocol]BrowserAddress” on page 32.

ICAHttpBrowserAddress

Value Type	String
Default Value	ica
Supported Values	Any valid server name or address
Platforms	Win32, WinCE
Sections	WFClient

Used for HTTP or HTTPS ICA browsing (**BrowserProtocol=HTTPonTCP**) if the browser address is not set through the **HTTPBrowserAddress** or the **Loc[Protocol]BrowserAddress** parameters.

ICAPortNumber

Value Type	Integer
Default Value	1494
Supported Values	0 - 65535
Platforms	WinDOS
Sections	WFClient

Specifies the TCP port to use to connect to the ICA Browser. The default port is 1494. You must change the port on all MetaFrame servers in the farm using the ICAPORT command line utility before you change this parameter on ICA Clients.

ICASOCKS[]

The following parameters are deprecated by **ProxyType**, but maintained to ensure backward compatibility with older .ini/.ica files that do not contain **ProxyType**:

- ICASOCKSProtocolVersion
- ICASOCKSProxyHost
- ICASOCKSPortNumber
- ICASOCKSrfc1929Password
- ICASOCKSrfc1929UserName
- ICASOCKSTimeout

ICASOCKSProtocolVersion

Value Type	Integer
Default Value	-1 (do not use SOCKS)
Supported Values	-1 0 4 5
Platforms	Win
Sections	WFClient

Important See **ICASOCKS[]** before modifying this parameter.

List of supported values:

- -1 - (None) Do not use SOCKS
- 0 - Auto detect
- 4 - Use SOCKS version 4
- 5 - Use SOCKS version 5

If **ICASOCKSProtocolVersion** is set, the following parameters are used to specify SOCKS proxy settings:

- ICASOCKSProxyHost
- ICASOCKSPortNumber
- ICASOCKSrfc1929Password
- ICASOCKSrfc1929UserName
- ICASOCKSTimeout

ICASOCKSProxyHost

Important See **ICASOCKS[]** before modifying this parameter.

Specifies the DNS name or IP address of the SOCKS proxy to use.

ICASOCKSProxyPortNumber

Important See **ICASOCKS[]** before modifying this parameter.

Specifies the port number of the SOCKS proxy server. The commonly used port is 1080.

ICASOCKSrfc1929Password

Important See **ICASOCKS[]** before modifying this parameter.

Holds the clear text password to be used to automatically request RFC 1929 authentication from a SOCKS Version 5 server.

ICASOCKSrfc1929UserName

Important See **ICASOCKS[]** before modifying this parameter.

Holds the user name to be used to automatically request RFC 1929 authentication from a SOCKS Version 5 server.

ICASOCKSTimeout

Important See **ICASOCKS[]** before modifying this parameter.

Specifies the time, in milliseconds (ms), to wait for browsing requests through a SOCKS proxy to be satisfied. This value is ignored if it is less than the Web browser default time-out (2,000 ms).

IconIndex

Value Type	Integer
Default Value	None
Platforms	Win
Sections	WFClient

Specifies the index number of the icon to use from the file specified by **IconPath**.

IconPath

Value Type	String
Default Value	%SystemDrive%\Program Files\Citrix\ICA Client\pn.exe
Platforms	Win
Sections	WFClient

Specifies the full path and name of the .exe or .dll file containing the icon for the application. Use **IconIndex** to specify the icon index number.

InitialProgram

Value Type	String
Default Value	None
Platforms	WinDOS
Sections	<i>applicationservername</i>
Corresponding UI Element	Properties dialog box > Application tab > Application text box

Specifies the initial program to start after establishing the associated custom ICA connection. For server connections, this is the full path and file name. For published applications, this is the name of the published application preceded by the pound (#) symbol.

Note .ica files must have this key specified.

Related Parameters: **LongCommandLine**

InputEncoding

Value Type	String
Default Value	ISO8859_1
Supported Values	ISO8859_1 SJIS EUC-JP
Platforms	Win32, Win16
Sections	Encoding (.ica files only)

Describes the character encoding type of the .ica file. This information is used by the client to convert and understand the .ica file if the Web server that created it used an encoding type that is different from the client's.

IPXBrowserAddress

See “[Protocol]BrowserAddress” on page 32.

KeyboardLayout

Value Type	String
Default Value	(User Profile)
Platforms	WinDOS
Sections	WFClient
Corresponding UI Element	ICA Settings dialog box > General tab > Keyboard Layout menu

Specifies the keyboard layout of the ICA Client device. The MetaFrame server uses the keyboard layout information to configure the ICA session for the client's keyboard layout. The default value causes the keyboard layout specified in the user profile to be used.

KeyboardTimer

Value Type	Integer
Default Value	0
Platforms	PN, WinDOS
Sections	applicationsetname (PN) applicationservername (WinDOS) WFClient (WinDOS)

If this parameter is set to a value greater than zero, keystrokes are queued for the number of milliseconds specified. Queuing causes the client to send keyboard updates to the MetaFrame server less frequently, reducing the number of network packets sent from the client to the server. Setting the value to zero turns queuing off and makes the session more responsive to keyboard input. Higher values improve performance when connecting over a RAS connection.

The default setting is optimized for WAN connections. In a dial-in or LAN environment, reducing this value may give better responsiveness. Using too low a value in a LAN environment may generate a large number of small packets that could degrade network performance.

KeyboardType

Value Type	String
Default Value	(Default)
Platforms	WinDOS
Sections	WFClient
Corresponding UI Element	ICA Settings dialog box > General tab > Keyboard Type menu

Specifies the keyboard type of the ICA Client device. The MetaFrame server uses this information to configure the ICA session for the client's keyboard type. Use the default value for most English and European keyboards. When using a Japanese keyboard, specifying the default will auto-detect the correct keyboard type. See the keyboard types listed for this option for a list of supported values for this parameter.

LanaNumber

Value Type	Integer
Default Value	0
Supported Values	0 1 2
Platforms	WinDOS
Sections	WFClient

Specifies the LANA number of the network card protocol. This is typically used only for NetBIOS.

List of supported values:

- 0 - NetBIOS over NetBEUI
- 1 - IPX
- 2 - TCP

Loc[Protocol]BrowserAddress

See “[Protocol]BrowserAddress” on page 32.

LocHTTPBrowserAddress

See “[Protocol]BrowserAddress” on page 32.

LocIPXBrowserAddress

See “[Protocol]BrowserAddress” on page 32.

LocNETBIOSBrowserAddress

See “[Protocol]BrowserAddress” on page 32.

LocTcpBrowserAddress

See “[Protocol]BrowserAddress” on page 32.

LogAppend

Value Type	Boolean
Default Value	Off
Supported Values	On Off
Platforms	WinDOS
Sections	WFClient
Corresponding UI Element	ICA Settings dialog box > Event Logging tab > Overwrite/Append to existing event log option

Switches between appending new log file entries to the end of the existing log file (On) and creating a new file (Off).

Applies only at start of session.

LogConnect

Value Type	Boolean
Default Value	On
Supported Values	On Off
Platforms	WinDOS
Sections	WFClient
Corresponding UI Element	ICA Settings dialog box > Event Logging tab > Connections and Disconnections option

Specifies whether (On) or not (Off) to log connections to and disconnections from MetaFrame servers.

LogErrors

Value Type	Boolean
Default Value	On
Supported Values	On Off
Platforms	WinDOS
Sections	WFClient
Corresponding UI Element	ICA Settings dialog box > Event Logging tab > Errors option

Specifies whether (On) or not (Off) to log errors with connections to MetaFrame servers.

LogFile

Value Type	File name
Default Value	wfclient.log
Platforms	DOS32
Sections	WFClient

Specifies the name of the ICA DOS Client log file. The log file is generated by the ICA Client at run-time and saved in the ICA Client directory. The types of details logged depends on the values of the **LogConnect**, **LogErrors**, **LogReceive**, and **LogTransmit** parameters.

LogFileGlobalPath

Value Type	Boolean
Default Value	Off
Supported Values	On Off
Platforms	WinDOS
Sections	WFClient

Specifies how log files are created:

If On, a single log file is used for all users of a given client device. **LogFileWin32** must specify the entire directory path to the log file, including the file name.

If Off, a separate log file is created for each user and stored in the user's profile directory. In this case, **LogFileWin32** specifies the file name only.

LogFileWin16

Value Type	File name
Default Value	wfcwin.log
Platforms	Win16
Sections	WFClient

Specifies the name of the log file on ICA Win16 Clients. The log file is generated by the ICA Client at run-time. The types of details logged depends on the values of the **LogConnect**, **LogErrors**, **LogReceive**, and **LogTransmit** parameters. Log data can alternately be sent to standard out or standard error by specifying **stdout** or **stderr** instead of a file name.

LogFileWin32

Value Type	File name
Default Value	wfcwin32.log
Platforms	Win32
Sections	WFClient
Corresponding UI Element	ICA Settings dialog box > Event Logging tab > Event Log File > Name text box

Specifies the name of the log file. The types of details logged depends on the values of the **LogConnect**, **LogErrors**, **LogReceive**, and **LogTransmit** parameters. Log data can alternately be sent to standard out or standard error by specifying **stdout** or **stderr** instead of a file name.

See **LogFileGlobalPath** for related information.

LogKeyboard

Value Type	Boolean
Default Value	Off
Supported Values	On Off
Platforms	WinDOS
Sections	WFClient
Corresponding UI Element	ICA Settings dialog box > Event Logging tab > Keyboard and Mouse Data option

Specifies whether (On) or not (Off) to log keystrokes. Use this only as directed by Citrix Technical Support.

LogReceive

Value Type	Boolean
Default Value	Off
Supported Values	On Off
Platforms	WinDOS
Sections	WFClient
Corresponding UI Element	ICA Settings dialog box > Event Logging tab > Data Received option

Specifies whether (On) or not (Off) to log each packet received from a MetaFrame server. Use this only as directed by Citrix Technical Support.

LogTransmit

Value Type	Boolean
Default Value	Off
Supported Values	On Off
Platforms	WinDOS
Sections	WFClient
Corresponding UI Element	ICA Settings dialog box > Event Logging tab > Data Transmitted option

Specifies whether (On) or not (Off) to log each packet sent to a MetaFrame server. Use only as directed by Citrix Technical Support.

LongCommandLine

Value Type	String
Default Value	None
Platforms	Win32
Sections	<i>applicationservername</i>

Allows you to pass a very long string of parameters to the program specified in **InitialProgram**. The value of **LongCommandLine** replaces any command-line parameters specified at the end of **InitialProgram**. Requires MetaFrame XP or later.

Note To provide **LongCommandLine** support without breaking compatibility with older ICA Clients, all lines in the .ica/.ini file must be limited to 255 characters. To support longer command lines, use a series of **LongCommandLine** parameters as follows:

```
LongCommandLine="The beginning of my long command line"
LongCommandLine000="continuation of my long command line"
LongCommandLine001="the rest of my long command line"
```

Each value must be in quotation marks (" ") and must not exceed 224 characters. The ICA Client engine concatenates the values to create a single long command line parameter. You can include as many **LongCommandLine[]** parameters as necessary.

MaximumCompression

Value Type	Boolean
Default Value	Off
Supported Values	On Off
Platforms	PN, WinDOS
Sections	applicationsetname (PN) applicationservername (WinDOS) WFClient (WinDOS)

Specifies whether (On) or not (Off) to use maximum data compression. Data compression reduces the amount of data that needs to be transferred but requires additional processing on both the ICA Client and MetaFrame server to compress and decompress the data. Enabling data compression increases performance over bandwidth-limited connections.

MouseTimer

Value Type	Integer
Default Value	100
Platforms	PN, WinDOS
Sections	WFClient <i>applicationsetname</i> (PN) <i>applicationservername</i> (WinDOS)

If this parameter is set to a value greater than zero, mouse event updates are queued for the number of milliseconds specified. Queuing causes the client to send mouse updates to the MetaFrame server less frequently, reducing the number of network packets sent from the client to the server. Setting the value to zero turns queuing off and makes the session more responsive to mouse movements. Higher values improve performance when connecting over a RAS connection.

The default setting is optimized for WAN connections. In a dial-in or LAN environment, reducing this value may give better responsiveness. Using too low a value in a LAN environment may generate a large number of small packets that could degrade network performance.

NameEnumerator

Value Type	File name
Default Value	Depends on platform & protocol. See below for details.
Platforms	WinDOS
Sections	<i>transportdrivername</i>

Specifies the file name of the module to load for server name enumeration. Default values are determined by platform and protocol as follows:

Protocol	Platform	Value (file name)
TCP	NameEnumeratorWin16	NETCPW.DLL
TCP	NameEnumeratorWeb16	NEHTTPW.DLL
TCP	NameEnumeratorWin32	NETCPN.DLL
TCP	NameEnumeratorWeb32	NEHTTPN.DLL

SPX/IPX	NameEnumerator	NEIPX.DDL
SPX/IPX	NameEnumeratorWin16	NEIPXW.DLL
SPX/IPX	NameEnumeratorWin32	NEIPXN.DLL
NetBIOS	NameEnumerator	NENETB.DDL
NetBIOS	NameEnumeratorWin16	NENETBW.DLL
NetBIOS	NameEnumeratorWin32	NENETBN.DLL
TCP/FTP	NameEnumerator	NETCPFTP.DDL
TCP/IP - Novell Lan WorkPlace	NameEnumerator	NETCPNOV.DDL
TCP/IP - Microsoft	NameEnumerator	NETCPMS.DDL
TCP/IP - VSL	NameEnumerator	NENUM.DDL

NameResolver

Value Type	File name
Default Value	None
Platforms	WinDOS
Sections	<i>transportdrivename</i>

Specifies the file name of the module to load for name-to-address resolution.

NETBIOSBrowserAddress

See “[Protocol]BrowserAddress” on page 32.

NoAutoDetectProtocol

Value Type	Boolean
Default Value	On
Supported Values	On Off
Platforms	PN
Sections	<i>applicationsetname</i> (PN)
Corresponding UI Element	Settings dialog box > Connection tab > Auto-detect network protocol option

Specifies whether (Off) or not (On) to auto-detect the network protocol to use. When the value is On, the client uses the transport driver specified in **TransportDriver**.

NoDeskInt

Value Type	Boolean
Default Value	Off
Supported Values	On Off
Platforms	PN
Sections	<i>applicationsetname</i> (PN)
Corresponding UI Element	Settings dialog box > Default Options tab > Turn off desktop integration for this application set option

Specifies whether (On) or not (Off) to enable Desktop Integration. Desktop Integration adds icons to the Windows desktop and Start menu. This does not recreate icons removed from the Windows desktop or Start menu by the user.

NoSavePwordOption

Value Type	Boolean
Default Value	Off
Supported Values	On Off
Platforms	Win32; PN only
Sections	<i>applicationsetname</i> <i>applicationservername</i>
Corresponding UI Element	For <i>applicationsetname</i> : Settings dialog box > Logon Information tab > User-specified credentials option > Password text box; Save password option For <i>applicationservername</i> : Properties dialog box > Logon Information tab > User-specified credentials option > Password text box; Save password option

Enables (Off) or disables (On) the Password text box and shows (Off) or hides (On) the Save password option. When set to On users cannot enter or save their password from the user interface.

Password

Value Type	String
Default Value	None
Platforms	WinDOS
Sections	<i>applicationservername</i>
Corresponding UI Element	Properties dialog box > Logon Information tab > User-specified credentials option > Password text box

Specifies the encrypted password to use when refreshing the associated custom ICA connection.

PersistentCacheEnabled

Value Type	Boolean
Default Value	Off
Supported Values	On Off
Platforms	PN, WinDOS
Sections	<i>applicationsetname</i> (PN)
Corresponding UI Element	Settings dialog box > Default Options tab > Use disk cache for bitmaps option

Specifies whether (On) or not (Off) to use the persistent disk cache. The persistent disk cache stores commonly used graphical objects such as bitmaps on the client device's hard drive.

Using persistent disk cache increases performance across low-bandwidth connections. This performance increase, however, comes at the expense of a reduction of available client disk space. For clients on high-speed LANs, using persistent disk cache is, therefore, not warranted. Disk caching is enabled by default for dial-in connections.

PersistentCacheGlobalPath

Value Type	Boolean
Default Value	Off
Supported Values	On Off
Platforms	WinDOS
Sections	WFClient

Specifies what type of cache directory is used:

If On, a single cache directory is used for all users of a given client device. **PersistentCachePath** must specify the entire directory path to the cache directory, including the cache directory name.

If Off, a separate cache directory is created for each user and stored in the user's profile directory. In this case, **PersistentCachePath** specifies the cache directory name only.

PersistentCacheMinBitmap

Value Type	Integer
Default Value	8192
Platforms	WinDOS
Sections	WFClient
Corresponding UI Element	ICA Settings dialog box > Bitmap Cache tab > Bitmap Minimum Size slider

Specifies the minimum size in bytes of bitmaps to store in the persistent disk cache.

PersistentCachePath

Value Type	String
Default Value	C:\Documents and Settings\username\ Application Data\ICAClient\Cache
Platforms	WinDOS
Sections	WFClient
Corresponding UI Element	ICA Settings dialog box > Bitmap Cache tab > Bitmap Cache Directory text box

Specifies the location of the persistent disk cache.

PersistentCachePercent

Value Type	Integer
Default Value	1
Supported Values	Integers in the range of 1 through 100
Platforms	WinDOS
Sections	WFClient

Specifies the percentage of hard drive space to use for the persistent disk cache. When this parameter is changed through the Program Neighborhood user interface, **PersistentCacheSize** is recomputed based on **PersistentCachePercent** and the total size of the hard drive specified in (**PersistentCachePath**).

PersistentCacheSize

Value Type	Integer
Default Value	None
Platforms	WinDOS
Sections	WFClient
Corresponding UI Element	ICA Settings dialog box > Bitmap Cache tab > Bitmap Cache Size option

Specifies the size of the persistent disk cache, in bytes.

PingServer

Value Type	Boolean
Default Value	Off
Supported Values	On Off
Platforms	Win32/Win16
Sections	WFClient

Specifies whether (On) or not (Off) to transmit an ICMP packet in advance of sending a UDP broadcast to the first entry in the **Server Location** address list. Use **PingServer** when a client cannot contact a MetaFrame server across an ATM network initially, but successfully connects on the second attempt.

Note The ICMP packet is sent only to the first address in the **Server Location** address list.

PNCacheRefresh

Value Type	Boolean
Default Value	Off
Supported Values	On Off
Platforms	PN
Sections	<i>applicationsetname</i>

Specifies whether (On) or not (Off) to automatically refresh the list of applications available in the application set the next time Program Neighborhood is run.

PNCacheVersion

Value Type	Integer
Default Value	1
Supported Values	1
Platforms	Win32; PN only
Sections	WFClient

Specifies the version of the current user's Program Neighborhood (PN) cache files. If the version number of the PN cache files differs from that of the PN cache client module, the PN cache is invalidated and rebuilt.

PNDefault

Value Type	String
Default Value	None
Platforms	PN
Sections	WFClient
Corresponding UI Element	Find New Application Set wizard > second screen, second text box

Specifies the default application set.

PNName

Value Type	String
Default Value	None
Platforms	PN
Sections	<i>applicationsetname</i>
Corresponding UI Element	Program Neighborhood window > published application set name

Specifies the display name for the application set.

Note Do not change the value of this parameter from within `pn.ini`. Change the name of the application set from inside the Program Neighborhood window instead.

PNUIHeight

Value Type	Integer
Default Value	429
Platforms	PN
Sections	WFClient

Specifies the height, in pixels, of the Program Neighborhood window.

PNUIHPos

Value Type	Integer
Default Value	96
Platforms	PN
Sections	WFClient

Specifies the horizontal position of the Program Neighborhood window. The value is the distance, in pixels, of the left edge of the Program Neighborhood window from the left edge of the Windows desktop.

PNUINoAutoSearch

Value Type	Boolean
Default Value	(see description)
Supported Values	On Off
Platforms	PN
Sections	WFClient

Specifies whether (Off) or not (On) the ICA Client automatically searches the network for application sets and adds them to the list in the Program Neighborhood window.

By default, **PNUINoAutoSearch** is set to Off until Program Neighborhood is first run. Program Neighborhood then performs the search and changes the value of the parameter to On so that the search is not automatically performed again. Users can manually perform a search by double-clicking the Find New Application Set icon.

PNUIShowSB

Value Type	Integer
Default Value	1
Platforms	PN
Supported Values	1 2
Sections	WFClient
Corresponding UI Element	View menu > Status bar

Specifies whether (1) or not (2) to display the Program Neighborhood status bar.

PNUIShowTB

Value Type	Integer
Default Value	1
Platforms	PN
Supported Values	1 2
Sections	WFClient
Corresponding UI Element	View menu > Toolbars > Standard Buttons

Specifies whether (1) or not (2) to display the Program Neighborhood toolbar with standard buttons.

PNUIShowTBText

Value Type	Integer
Default Value	1
Platforms	PN
Supported Values	1 2
Sections	WFClient
Corresponding UI Element	View menu > Toolbars > Text Labels

Specifies whether (1) or not (2) to display text labels for the Program Neighborhood toolbar.

Note If the toolbar is not displayed, this parameter has no effect. See **PNUIShowTB** for displaying the toolbar.

PNUIViewType

Value Type	Integer
Default Value	40028 (large icons)
Supported Values	40028 40029 40030 40031
Platforms	PN
Sections	WFClient
Corresponding UI Element	View menu > Large Icons, Small Icons, List, Details options

Specifies the view options for the Program Neighborhood window.

List of supported values:

- 40028 - Large icons
- 40029 - Small icons
- 40030 - List
- 40031 - Details

PNUIVPos

Value Type	Integer
Default Value	71
Platforms	PN
Sections	WFClient

Specifies the vertical position of the Program Neighborhood window. The value is the distance, in pixels, of the top edge of the Program Neighborhood window from the top edge of the Windows desktop.

PNUIWidth

Value Type	Integer
Default Value	576
Platforms	PN
Sections	WFClient

Specifies the width, in pixels, of the Program Neighborhood window.

PreferTw1

Value Type	Boolean
Default Value	Off
Supported Values	On Off
Platforms	WinDOS
Sections	ThinWire3.0

Specifies whether (On) or not (Off) to use ICA Display Version 1 compatibility mode. This parameter overrides the server-side preference.

Note Older versions of the ICA Client that do not support ICA Display Version 2 always use Version 1, regardless of the value of this parameter.

ProtocolSupport

Value Type	File name
Default Value	Depends on protocol. See below for details.
Platforms	WinDOS
Sections	<i>transportdrivername</i> <i>winstationdrivername</i>

Specifies the list of protocol drivers to load, in order. The list contains the section names that describe each specific protocol driver. Protocol drivers listed here, but not listed in the **WinStationDriver** section, are not loaded. Flags within this section can be used to optionally select a particular driver.

Protocol	Supported Values of ProtocolSupport
Interrupt & COM Sections	Modem, Frame, Reliable, Encrypt, Compress
IPX	Reliable, Encrypt, Compress
SPX	Encrypt, Compress
TCP/IP	RFrame, Encrypt, Compress
SPX/IPX	NameEnumerator
SPX/IPX	NameEnumeratorWin16
SPX/IPX	NameEnumeratorWin32
NetBIOS	Encrypt, Compress
TCP/IP - FTP	RFrame, Encrypt, Compress
TCP/IP - Novell Lan WorkPlace	RFrame, Encrypt, Compress
TCP/IP - Microsoft	RFrame, Encrypt, Compress
TCP/IP - VSL	RFrame, Encrypt, Compress
ICA 3.0	Modem, RFrame, Frame, Reliable, Encrypt, Compress

Proxy[]

This section covers the following parameters:

- ProxyAutoConfigURL
- ProxyBypassList
- ProxyHost
- ProxyBypassList
- ProxyHost
- ProxyPassword
- ProxyTimeout
- ProxyType
- ProxyTimeout

Note All Proxy[] parameters are typically read from **WFClient**. However, if a given *applicationservername* section specifies **DoNotUseDefaultCSL=On**, these parameters read from that *applicationservername* section instead.

ProxyAutoConfigURL

Value Type	String
Default Value	N/A
Platforms	Win32, WinCE, Unix
Sections	WFClient

Specifies the location of a proxy auto-detection (.pac) script. It must be set if the value of **ProxyType** is Script. Otherwise, it is ignored.

ProxyBypassList

Value Type	String
Default Value	Empty List
Platforms	Win32, WinCE, Unix
Sections	WFClient

Specifies a list of hosts for which to bypass proxy connections. An asterisk (*) included in a host name acts as a wildcard (for example, *.widgets.com). Multiple hosts must be separated by a semicolon (;) or comma (.). This parameter is ignored if the value of **ProxyHost** is None or Auto.

ProxyHost

Value Type	String
Default Value	N/A
Platforms	Win32, WinCE, Unix
Sections	WFClient

Specifies the address of the proxy server. It is required if the value of **ProxyType** is any of the following: **Socks**, **SocksV4**, **SocksV5**, **Secure**. **ProxyHost** is otherwise ignored.

To indicate a port number other than 1080 (default for SOCKS) or 8080 (default for Secure), append the appropriate port number to the value after a colon (:).

ProxyPassword

Value Type	String
Default Value	Prompt user
Platforms	Win32, WinCE, Unix
Sections	WFClient

Holds the clear text password to be used to automatically authenticate the client to the proxy.

ProxyTimeout

Value Type	Integer
Default Value	Uses value of BrowserTimeout if BrowserTimeout is specified. Otherwise uses Web browser default timeout (2,000 ms)
Platforms	Win32, WinCE, Unix
Sections	WFClient

Specifies the time, in milliseconds (ms), to wait for browsing requests through a proxy server to be satisfied.

Note This value is ignored if it is less than the Web browser default time-out (2,000 ms).

ProxyType

Value Type	String
Default Value	None
Supported Values	None Auto Socks SocksV4 SocksV5 Secure Script

Note **ProxyHost** must be set if the value of **ProxyType** is one of the following: Socks, SocksV4, SocksV5, Secure.

ProxyAutoConfigURL must be set if the value of **ProxyType** is Script.

Platforms	Win32, WinCE
Sections	WFClient

Identifies the proxy type requested for the connection.

List of supported values:

- None - Use direct connection
- Auto - Auto-detect proxy configuration from Web browser
- Socks - Use SOCKS proxy (auto-detect protocol version)
- Socks4 - Use SOCKS proxy with Version 4 protocol
- Socks5 - Use SOCKS proxy with Version 5 protocol
- Secure - Use Secure (HTTPS) proxy
- Script - Interpret proxy auto-configuration (.pac) script

ProxyUsername

Value Type	String
Default Value	Prompt user
Platforms	Win32, WinCE, Unix
Sections	WFClient

Holds the user name to be used to automatically authenticate the client to the proxy.

Reducer

Value Type	File name
Default Value	ICAREDU.DDL
Platforms	DOS
Sections	<i>winstationdrivername</i>

Warning Fixed value. Do not change.

ReducerWin16

Value Type	File name
Default Value	ICAREDUW.DLL
Platforms	Win16
Sections	<i>winstationdrivername</i>

Warning Fixed value. Do not change.

ReducerWin32

Value Type	File name
Default Value	ICAREDUN.DLL
Platforms	Win32
Sections	<i>winstationdrivername</i>

Warning Fixed value. Do not change.

Reliable

Value Type	Boolean
Default Value	On
Supported Values	On Off
Platforms	WinDOS
Sections	<i>transportdrivername</i>

Specifies the flag associated with the Reliable protocol driver. If **Reliable** is set to On and **Reliable** is in the **ProtocolSupport** list, the Reliable protocol driver is loaded.

RuntimePrompt

Value Type	Boolean
Default Value	On
Supported Values	On Off
Platforms	Win32, Win16
Sections	WFClient

Specifies whether (On) or not (Off) to display the **Connect To** dialog box before making dial-up connections.

SavePNPassword

Value Type	Boolean
Default Value	Off
Supported Values	On Off
Platforms	PN, WinDOS
Sections	<i>applicationsetname</i> (PN) <i>applicationservername</i> (WinDOS)

Specifies whether (On) or not (Off) to save the password for the entry. The password is saved in a dynamically created .vl file in the user's %userprofile%\Application Data\ICAClient directory. If this parameter is set to Off, the size of the .vl file is zero bytes.

ScreenPercent

Value Type	Integer
Default Value	0
Supported Values	Integers in the range of 1 through 100
Platforms	PN, Win
Sections	WFClient <i>applicationsetname</i> (PN) <i>applicationservername</i> (WinDOS)

If **DesiredWinType** is set to 5, this parameter is used to specify the size of the ICA session as a percentage of total screen size.

SecureChannelProtocol

Value Type	String
Default Value	Detect
Supported Values	TLS SSL Detect
Platforms	PN, Win
Sections	WFClient

Specifies which secure channel protocol to use.

serverentryname

See “applicationservername” on page 25.

SkipRedrawPerPaletteChange

Value Type	Boolean
Default Value	Off
Supported Values	On Off
Platforms	WinDOS
Sections	WFClient

Specifies whether (On) or not (Off) to skip redrawing the screen after a palette change. If this parameter is enabled, **HowManySkipRedrawPerPaletteChange** specifies how many palette changes are skipped before each redraw. Use this only as directed by Citrix Technical Support.

SSLCACert[0,...,n]

Not used by Win32 ICA Clients.

SSLCiphers

Value Type	String
Default Value	ALL
Supported Values	ALL COM GOV
Platforms	Win32, Java, Unix
Sections	WFClient <i>applicationsetname</i> <i>applicationservername</i>

On platforms that support multiple SSL cipher suites (currently Win32 only), this parameter determines which cipher suite(s) the ICA Client is permitted to use to establish an SSL connection.

List of supported values:

- COM = RC4
- GOV = 3DES
- ALL = either

Non-Win32 platforms are locked (hard-coded) to **COM**.

SSLCommonName

Value Type	String
Default Value	N/A
Platforms	Win32
Sections	WFClient for all custom ICA connections unless otherwise overridden applicationservername for each custom ICA connection where DoNotUseDefaultCSL=On

If the value of **SSLProxyHost** is not identical to that of the server name as it appears in the SSL certificate, this parameter is required, and its value must specify the server name as it appears in the SSL certificate.

SSLEnable

Value Type	Boolean
Default Value	Off
Supported Values	On Off
Platforms	Win32
Sections	WFClient

The value of this parameter must be On to enable SSL. This setting is ignored by network protocols other than TCP/IP.

SSLNoCACerts

Not used by Win32 ICA Clients.

SSLProxyHost

Value Type	String
Default Value	*
Platforms	Win32
Sections	WFClient for all custom ICA connections unless otherwise overridden applicationservername for each custom ICA connection where DoNotUseDefaultCSL=On

By default, this parameter is not present, or, if present, the value is set to ***:443**. Assuming that every MetaFrame server in a server farm has its own SSL relay, the asterisk means that the address of the SSL relay is the same as that of the MetaFrame server.

If not every MetaFrame server in a given server farm has its own relay, the value can specify an explicit server name in place of the asterisk. If the value is an explicit server name, SSL traffic enters the server farm through the server whose name is specified by the value. The server name value must match the server name in the server's SSL certificate; otherwise, SSL communications will fail.

For listening port numbers other than 443, the port number is appended to the server name following a colon “,”:

```
SSLProxyHost=*:<SSL relay port number> ,
```

where <SSL relay port number> is the number of the listening port.

Related parameter: **SSLCommonName**

SSOnCredentialType

Value Type	String
Default Value	Any
Supported Values	Any NT NDS
Platforms	Win32
Sections	WFClient

Allows particular credentials (Windows, NetWare, either) to be used with pass-through authentication on client devices that have the Novell Client installed.

SSOnUserSetting

Value Type	Boolean
Default Value	N/A
Supported Values	On Off
Platforms	PN
Sections	WFClient
Corresponding UI Element	For published application sets: Settings dialog box > Logon Information tab > Pass-through authentication option For published custom ICA connections: Properties dialog box > Logon Information tab > Pass-through authentication option

Selects (On) or clears (Off) the **Pass-through authentication** option. You must choose to use pass-through authentication when installing the ICA Client for this parameter to have an effect.

Related parameters: **EnableSSOnThruICAFile**, **UseLocalUserAndPassword**

SwapButtons

Value Type	Boolean
Default Value	Off
Supported Values	On Off
Platforms	Win32, Win16, WinCE, DOS
Sections	WFClient

Specifies whether (On) or not (Off) to swap the function of the ICA Client device's mouse buttons within the ICA session.

TCPBrowserAddress

See “[Protocol]BrowserAddress” on page 32.

TransportDriver

Value Type	String
Default Value	see following table
Supported Values	TCP/IP IPX SPX NETBIOS
Platforms	Win32, Win16, WinCE
Sections	<i>applicationsetname</i> <i>applicationservername</i>

In combination with “BrowserProtocol” (page 37), this parameter corresponds to the **Network Protocol** option in the Program Neighborhood user interface.

TransportDriver specifies the network protocol used for ICA *connections*.

BrowserProtocol specifies the network protocol used for ICA *browsing*.

The value must correspond to one of the transport drivers specified in the **TransportDriver** section of module.ini.

Name of Network Protocol in Program Neighborhood User Interface	Corresponding value of <i>TransportDriver</i>	Corresponding value of <i>BrowserProtocol</i>
TCP/IP	TCP/IP	UDP
TCP/IP+HTTP	TCP/IP UDP HTTPonTCP IPX SPX NETBIOS	HTTPonTCP
IPX	IPX	IPX
SPX	SPX	SPX
NETBIOS	NETBIOS	NETBIOS
SSL/TLS+HTTPS	TCP/IP	HTTPonTCP

Note SSL/TLS+HTTPS network protocol also requires **SSLEnable=On**.

TW2CachePower

Value Type	Integer
Default Value	see description below
Platforms	Win32, Win16, WinCE
Sections	ThinWire3.0

Specifies, in powers of 2 bytes, the size of the ThinWire cache. For example, a **TW2CachePower** value of 23 creates an 8MB (2^{23} bytes) ThinWire cache.

If you specify a value, set it in the range of 19 to 25. Any value less than 19 is reset to 19; any value greater than 25 is reset to 25. If you do not specify a value, the ThinWire driver automatically computes the initial size based on connection resolution and color depth, applying a value in the range of 22 to 25. If the required memory space cannot be allocated, the value is gradually lowered until it matches the actual amount of available memory space. If memory space equivalent to a value of 19 (512KB) cannot be allocated, the connection is dropped.

TWIMode

Value Type	Boolean
Default Value	Off
Supported Values	On Off
Platforms	Win32
Sections	<i>applicationsetname</i> <i>applicationservername</i>

Specifies whether (On) or not (Off) to use seamless mode for all connections in the associated application set or for the associated custom ICA connection. Set the parameters **DesiredVRES**, **DesiredHRES**, and **DesiredWinType** accordingly.

UIDomain

Value Type	String
Default Value	None
Platforms	WinDOS
Sections	<i>applicationsetname</i>
Corresponding UI Element	Settings dialog box > Logon Information tab > User-specified credentials option > Domain text box

Specifies the domain name to use when refreshing the associated *published application set*. See **Domain** for information about domain names for *custom ICA connections*.

UpdatesAllowed

Value Type	Boolean
Default Value	On
Supported Values	On Off
Platforms	Win32, Win16, WinCE
Sections	WFClient

Specifies whether (On) or not (Off) to allow client updates. This parameter is set by the **Allow automatic client updates** option.

UseAlternateAddress

Value Type	Boolean
Default Value	0
Supported Values	On Off
Platforms	Win32, Win16, WinCE
Sections	<p>WFClient for all custom ICA connections unless otherwise overridden</p> <p>applicationsetname for each published application set where DoNotUseDefaultCSL=On</p> <p>applicationservername (WinDOS)</p> <p>applicationservername for each custom ICA connection where DoNotUseDefaultCSL=On</p>
Corresponding UI Element	<p>For applicationsetname: Settings dialog box > Connection tab > Firewalls > Use alternate address for firewall connection option</p> <p>For applicationservername: Properties dialog box > Connection tab > Firewalls > Use alternate address for firewall connection option</p>

Selects (1) or clears (0) the **Use alternate address for firewall connection** option. Used to perform Network Address Translation (NAT).

Firewalls use IP address translation to convert public (Internet) IP addresses into private (intranet) IP addresses. Public IP addresses are called *external* addresses because they are external to the firewall, while private IP addresses are called *internal* addresses. In this context, alternate means external.

An ICA Client configured to use TCP/IP server location network protocol sends a directed UDP datagram to the server IP address, using TCP/IP port 1604. Any intervening firewall must be configured to allow UDP packets to pass port 1604 or client-server communication fails.

If a fixed server location address is specified, the ICA Client contacts that server to determine the address of the ICA Master Browser. When the ICA Client connects by server or published application name, the ICA Master Browser returns the address of the requested server or published application.

You can use **UseAlternateAddress** for TCP/IP connections only. To specify the server's IP Address, you must include the following statement in the [**WFClient**] section of the ICA file:

```
TcpBrowserAddress=<ipaddress> ,
```

where <ipaddress> is the IP address of the MetaFrame server. You must also use the ALTADDR command on the MetaFrame server with IP address <ipaddress> that is accessed by the ICA file.

See the *MetaFrame Administrator's Guide* for more information about the ALTADDR command.

UseDefaultEncryption

Value Type	Boolean
Default Value	Off
Supported Values	On Off
Platforms	Win32, Win16, WinCE
Sections	<i>applicationsetname</i> (PN) <i>applicationservername</i> (WinDOS)
Corresponding UI Element	For <i>applicationsetname</i> : Settings dialog box > Default Options tab > Encryption Level > Use Server Default option For <i>applicationservername</i> : Properties dialog box > Options tab > Encryption Level > Use Custom Default option

In ***applicationsetname***: Specifies whether to use the server-side default encryption setting (On), or the setting specified in ***applicationsetname*** (Off). ***EncryptionLevel*** must be specified in ***applicationsetname*** if the value of ***UseDefaultEncryption*** in ***applicationsetname*** is Off.

In ***applicationservername***: Specifies whether to use the custom default encryption setting in **WFClient** (On), or the setting specified in ***applicationservername*** (Off). ***EncryptionLevel*** must be specified in ***applicationservername*** if the value of ***UseDefaultEncryption*** in ***applicationservername*** is Off.

UseDefaultSound

Value Type	Boolean
Default Value	On
Supported Values	On Off
Platforms	PN, WinDOS
Sections	<i>applicationsetname</i> (PN) <i>applicationservername</i> (WinDOS)
Corresponding UI Element	For <i>applicationsetname</i> : Settings dialog box > Default Options tab > Enable Sound > Use Server Default option For <i>applicationservername</i> : Properties dialog box > Options tab > Enable Sound > Use Custom Default option

In ***applicationsetname***: Specifies whether to use the server-side default sound quality setting (On), or the setting specified in ***applicationsetname*** (Off).

In ***applicationservername***: Specifies whether to use the custom default sound quality setting in **WFClient** (On), or the setting specified in ***applicationservername*** (Off).

UseDefaultWinColor

Value Type	Boolean
Default Value	Off
Supported Values	On Off
Platforms	PN, WinDOS
Sections	<i>applicationsetname</i> (PN) <i>applicationservername</i> (WinDOS)
Corresponding UI Element	For <i>applicationsetname</i> : Settings dialog box > Default Options tab > Window Colors > Use Server Default option For <i>applicationservername</i> : Properties dialog box > Options tab > Window Colors > Use Custom Default option

In ***applicationsetname***: Specifies whether to use the server-side default window color setting (On), or the setting specified in ***applicationsetname*** (Off).

In ***applicationservername***: Specifies whether to use the custom default window color setting in **WFClient** (On), or the setting specified in ***applicationservername*** (Off).

UseDefaultWinSize

Value Type	Boolean
Default Value	Off
Supported Values	On Off
Platforms	PN, WinDOS
Sections	<i>applicationsetname</i> (PN) <i>applicationservername</i> (WinDOS)
Corresponding UI Element	For <i>applicationsetname</i> : Settings dialog box > Default Options tab > Window Size > Use Server Default option For <i>applicationservername</i> : Properties dialog box > Options tab > Window Size > Use Custom Default option

In ***applicationsetname***: Specifies whether to use the server-side default window size setting (On), or that specified in ***applicationsetname*** (Off).

In ***applicationservername***: Specifies whether to use the custom default window size setting in **WFClient** (On), or that specified in ***applicationservername*** (Off).

UseLocalUserAndPassword

Value Type	Boolean
Default Value	On
Supported Values	On Off
Platforms	PN
Sections	<i>applicationsetname</i> <i>applicationservername</i>
Corresponding UI Element	For <i>applicationsetname</i> : Settings dialog box > Logon Information tab > Pass-through authentication option For <i>applicationservername</i> : Properties dialog box > Logon Information tab > Pass-through authentication option

Specifies whether (On) or not (Off) to use the same user name and password the user used to log on to the client computer for authentication to the MetaFrame server.

Note **SSOnUserSetting** must be set to On.

Related Parameters: **EnableSSOnThruICAFile**, **SSOnUserSetting**

Username

Value Type	String
Default Value	None
Platforms	PN, WinDOS
Sections	applicationservername (WinDOS)
Corresponding UI Element	Properties dialog box > Logon Information tab > User-specified credentials option > User name text box

Specifies the user name to use when refreshing the associated *custom ICA connection*.

Version

Value Type	Integer
Default Value	2
Platforms	WinDOS
Sections	WFClient

Warning Fixed value. Do not change.

VirtualDriver

Value Type	String
Default Value	None
Supported Values (in load order)	Thinwire3.0, ClientDrive, ClientPrinterQueue, ClientPrinterPort, Clipboard, ClientComm, ClientAudio, ClientManagement, LicenseHandler, ProgramNeighborhood, TWI, ZL_FONT, ZLC, SmartCard, ICACTL
Platforms	WinDOS
Sections	<i>virtualdrivername</i>

Specifies a list of virtual drivers to load, in sequence. The listed items correspond to section names containing parameters for each specific virtual driver. Individual features can be disabled by removing their drivers from this list (for example, remove **ClientDrive** to disable client drive mapping).

VSLAllowed

Value Type	Boolean
Default Value	On
Supported Values	On Off
Platforms	Win32, WinCE
Sections	<i>WFClient</i> <i>applicationservername</i>

Enables (On) or disables (Off) client printer spooling by controlling whether (On) or not (Off) the client printer mapping virtual driver in **ClientPrinterQueue** is loaded.

WinStationDriver

Value Type	String
Default Value	ICA 3.0
Platforms	Win32, WinCE
Sections	<i>applicationservername</i> of Template.ica

Lists all supported WinStation driver names. Each name has an associated section.

winstationdrivername

Value Type	String
Default Value	None
Platforms	WinDOS
Sections	<i>applicationservername</i> of appsrv.ini

Specifies the name of the WinStation driver to use. The name corresponds to a name in module.ini. This is usually ICA 3.0.

XmlAddressResolutionType

Value Type	String
Default Value	DNS-Port
Supported Values	DNS-Port IPv4-Port
Platforms	Win32
Sections	WFClient

Specifies the address resolution method used for XML requests. Address resolution is the process of resolving server and published application names to network addresses that the network driver can understand and use.

ZLKeyboardMode

Value Type	Integer
Default Value	0 (always off)
Supported Values	0 1 2
Platforms	Win
Sections	<i>applicationsetname</i> (PN) <i>applicationservername</i> (WinDOS)
Corresponding UI Element	For <i>applicationsetname</i> : Settings dialog box > Default Options tab > SpeedScreen Latency Reduction menu; Local text echo option For <i>applicationservername</i> : Properties dialog box > Options tab > SpeedScreen Latency Reduction menu; Local Text Echo option

Specifies whether or not to use local text echo.

List of supported values:

- 0 - Always off
- 1 - Always on
- 2 - Auto (see description)

For 2 (Auto), local text echo is used if the connection latency exceeds the high latency threshold set using the SpeedScreen Latency Reduction Manager. The MetaFrame server must support SpeedScreen Latency Reduction for this setting to take effect.

ZLMouseMode

Value Type	Integer
Default Value	2 (Auto)
Supported Values	0 1 2
Platforms	Win
Sections	<i>applicationsetname</i> (PN) <i>applicationservername</i> (WinDOS)
Corresponding UI Element	For <i>applicationsetname</i> : Settings dialog box > Default Options tab > SpeedScreen Latency Reduction menu; Mouse Click Feedback option For <i>applicationservername</i> : Properties dialog box > Options tab > SpeedScreen Latency Reduction menu; Mouse Click Feedback option

Specifies whether or not to use mouse click feedback.

List of supported values:

- 0 - Always off
- 1 - Always on
- 2 - Auto (see description)

For 2 (Auto), mouse click feedback is used if the connection latency exceeds the high latency threshold set using the SpeedScreen Latency Reduction Manager. The MetaFrame server must support SpeedScreen Latency Reduction for this setting to take effect.

Citrix License Agreement



This is a legal agreement ("AGREEMENT") between you, the Licensed User or representative of the Licensed User and Citrix Systems, Inc., or Citrix Systems International GmbH. Citrix Systems, Inc., a Delaware corporation, markets and supports this product or feature release (both hereinafter "PRODUCT") in the Americas. Citrix Systems International GmbH, a Swiss company wholly owned by Citrix Systems, Inc., markets and supports this PRODUCT in Europe, the Middle East, Africa, Asia, and the Pacific. Your location of receipt of this PRODUCT determines which is the licensing entity hereunder (the applicable entity is hereinafter referred to as "CITRIX"). BY OPENING THE SEALED DISK PACKAGE OR DOWNLOADING THE PRODUCT, YOU ARE AGREEING TO BE BOUND BY THE TERMS OF THIS AGREEMENT. IF YOU DO NOT AGREE TO THE TERMS OF THIS AGREEMENT, PROMPTLY RETURN THE UNUSED DISK PACKAGE TO THE PLACE WHERE YOU OBTAINED IT FOR A FULL REFUND OR EXIT THE DOWNLOAD PROCESS IMMEDIATELY.

1. GRANT OF LICENSE. This PRODUCT contains software that provides services on a computer called a server ("Server Software"), and may contain software that allows a computer to access or utilize the services provided by the Server Software ("Client Software"). CITRIX grants to you the following non-exclusive rights to the Server Software and Client Software, if any, and accompanying documentation (collectively called the "SOFTWARE"):

a) Installation and Transfer. You may install the Server Software on as many computers as your needs require (the "Server(s)"). You may also install the Client Software on as many computers, operating remotely or on one or more networks, as your needs require (the "Client(s)"), provided that these computers are used to access the Server(s), but the number of concurrent logins will be limited pursuant to Section 1.b.

b) Use of the Server Software. You may use one copy of the Server Software at any time on the Server(s) for support of Clients. The Server Software supports usage by more than one user at a time, but it may be used only to support up to the number of user logins you are entitled to based on your initial purchase of CITRIX licenses and any additional purchases of CITRIX licenses for the same SOFTWARE which increase the number of allowable logins. Additional licenses for other products may not be used to increase the number of allowable logins for the SOFTWARE (e.g., if the SOFTWARE is MetaFrame XP(TM), additional CITRIX licenses for MetaFrame XP(TM)s or XP(TM)a do not increase the number of allowable logins for the SOFTWARE). System management and other service features of the SOFTWARE may only be used to support the same SOFTWARE. Any attempt to use the SOFTWARE in violation of these limitations is a breach of this AGREEMENT. You may make one (1) copy of the SOFTWARE in machine-readable form solely for back-up purposes, provided that you reproduce all proprietary notices on the copy.

c) Use of the Client Software. You may use the Client Software to access the Server.

d) MetaFrame XP(TM)e Component Limitations on Use. The "Enterprise Services for NFuse" component of the MetaFrame XP(TM)e Server Software may be used only in support of MetaFrame XP(TM)e Servers or MetaFrame for UNIX(R) Servers. The "Citrix Installer" component of the MetaFrame XP(TM)e Server Software may be installed only on a Server on which MetaFrame XP(TM)e is installed. The "Citrix Packager" component of MetaFrame XP(TM)e Server Software may be installed and used only with a Server on which MetaFrame XP(TM)e is installed, or with Microsoft(R) Windows(R) NT Server 4.0, Terminal Server Edition, Microsoft Windows 2000 Server and Advanced Server, Windows 2000 Datacenter Server or their successors. The "Citrix Installer" component may be installed on a separate Server from the "Citrix Packager" component as recommended in the accompanying documentation.

e) Microsoft License. If you access terminal server functionality provided by Microsoft operating system products, you need to purchase additional licenses to use such products. Consult the license agreements for the Microsoft operating system products you are using to determine which licenses you must acquire.

f) Not For Resale Software. If this SOFTWARE is labeled "Not For Resale" or "NFR", your license only permits use for demonstration, test, or evaluation purposes.

g) Other. Notice to Users - You shall inform all users of the SOFTWARE of the terms and conditions of this AGREEMENT.

2. SUBSCRIPTION RIGHTS. If the licensed user has purchased a subscription to obtain "Updates" (as defined below) for the SOFTWARE (the "Subscription"), the following terms and conditions shall also apply. If the licensed user has paid the appropriate Subscription fee and registered its Subscription with CITRIX, the licensed user's Subscription shall begin on the date the licenses are activated as described in the accompanying documentation and shall continue for a term of one year thereafter unless terminated sooner (the "Subscription Term"). During the Subscription Term, CITRIX may, from time to time, generally make Updates available for licensing to the public. For the purposes of this AGREEMENT, an Update shall mean a generally available release of the same SOFTWARE (e.g., if the SOFTWARE is MetaFrame XP(TM)s, Updates do not include generally available releases for MetaFrame XP(TM)a or XP(TM)e). Upon general availability of Updates during the Subscription Term, CITRIX shall provide the licensed user with one (1) copy of each such Update for each copy of the SOFTWARE originally licensed by the licensed user pursuant to this AGREEMENT to support up to the number of user logins you are entitled to based your purchase of Subscription for such Citrix licenses, without additional charge. Any such Updates so delivered to the licensed user shall be considered SOFTWARE under the terms of this AGREEMENT.

The licensed user acknowledges that CITRIX may develop and market new or different computer programs which use portions of the SOFTWARE and which perform all or part of the functions performed by the SOFTWARE. Nothing contained in this AGREEMENT shall give the licensed user any rights with respect to such new or different computer programs. The licensed user also acknowledges that CITRIX is not obligated under this AGREEMENT to generally make any Updates available to the public. All deliveries of Updates shall be F.O.B. CITRIX. CITRIX shall have no responsibility under this AGREEMENT for the installation of any Updates.

3. DESCRIPTION OF OTHER RIGHTS AND LIMITATIONS. You may use the Server Software for the provision of application services to third party customers ("Hosting"). As a part of such Hosting, you may copy and distribute the Client Software, with its electronic, click-to-accept license, to such third party customers. You may not otherwise rent or lease the SOFTWARE, but you may transfer the SOFTWARE and accompanying written materials on a permanent basis, provided you retain no copies and the recipient agrees to the terms of this AGREEMENT. If the SOFTWARE is NFuse(TM) Classic Server Software, you may use the scripting capability to customize the look, feel and functionality of the SOFTWARE. You may not otherwise modify, translate, reverse engineer, decompile, or disassemble, create derivative works based on, or copy (except for back-up as permitted above) the SOFTWARE, except to the extent such foregoing restriction is expressly prohibited by applicable law. If the SOFTWARE is NFuse(TM) Elite, you may receive various third party content provision offers with the SOFTWARE documentation. Your election of such options shall be subject to the terms of such offers, including third party license terms regarding the content and its delivery. You may not remove any proprietary notices, labels, or marks on any SOFTWARE.

YOU MAY NOT USE, COPY, MODIFY, OR TRANSFER THE SOFTWARE OR ANY COPY IN WHOLE OR IN PART, OR GRANT ANY RIGHTS IN THE SOFTWARE OR ACCOMPANYING DOCUMENTATION, EXCEPT AS EXPRESSLY PROVIDED IN THIS AGREEMENT. ALL RIGHTS NOT EXPRESSLY GRANTED ARE RESERVED BY CITRIX OR ITS SUPPLIERS.

You hereby agree, that to the extent that any applicable mandatory laws (such as, for example, national laws implementing EC Directive 91/250 on the Legal Protection of Computer Programs) give you the right to perform any of the aforementioned activities without the consent of CITRIX in order to gain certain information about the SOFTWARE for purposes specified in the respective statutes, before you exercise any such rights, you shall first request such information from CITRIX in writing detailing the purpose for which you need the information. Only if and after CITRIX, at its sole discretion, partly or completely denies your request, shall you exercise your statutory rights.

Limited Warranty and Disclaimer. CITRIX warrants that, for a period of ninety (90) days from the date of delivery of the SOFTWARE to you, the media on which the SOFTWARE is furnished, if any, under normal use will be free from defects in materials and workmanship, and that the SOFTWARE will perform substantially in accordance with the CITRIX product documentation published by CITRIX and included with the SOFTWARE. CITRIX and its suppliers' entire liability and your exclusive remedy under this warranty (which is subject to you returning the SOFTWARE to CITRIX or an authorized reseller) will be, at the option of CITRIX, to replace the media and/or SOFTWARE or to refund the purchase price and terminate this AGREEMENT. This limited warranty excludes coverage of third party content delivery offered in conjunction with NFuse(TM) Elite, if any.

EXCEPT FOR THE ABOVE LIMITED WARRANTY, CITRIX AND ITS SUPPLIERS MAKE AND YOU RECEIVE NO WARRANTIES OR CONDITIONS, EXPRESS, IMPLIED, STATUTORY, OR OTHERWISE, AND CITRIX AND ITS SUPPLIERS SPECIFICALLY DISCLAIM ANY CONDITIONS OF QUALITY AND ANY IMPLIED WARRANTIES, INCLUDING, WITHOUT LIMITATION, ANY WARRANTY OF MERCHANTABILITY, NONINFRINGEMENT, OR FITNESS FOR A PARTICULAR PURPOSE. YOU ASSUME THE RESPONSIBILITY FOR THE SELECTION OF THE SOFTWARE AND HARDWARE TO ACHIEVE YOUR INTENDED RESULTS, AND FOR THE INSTALLATION OF, USE OF, AND RESULTS OBTAINED FROM THE SOFTWARE AND HARDWARE. CITRIX DOES NOT WARRANT THAT USE OF THE SOFTWARE WILL BE UNINTERRUPTED OR ERROR FREE.

Proprietary Rights. This license is not a sale. Title and copyright rights to the SOFTWARE, accompanying documentation and any copies made by you remain with CITRIX or its suppliers.

Limitation of Liability. TO THE EXTENT PERMITTED BY APPLICABLE LAW, YOU AGREE THAT NEITHER CITRIX NOR ITS AFFILIATES, SUPPLIERS, OR AUTHORIZED DISTRIBUTORS SHALL BE LIABLE FOR ANY LOSS OF DATA, LOSS OF INCOME, LOSS OF OPPORTUNITY OR PROFITS, COST OF RECOVERY, OR ANY OTHER SPECIAL, INCIDENTAL, CONSEQUENTIAL, OR INDIRECT DAMAGES ARISING OUT OF OR IN CONNECTION WITH THIS AGREEMENT, OR THE USE OF THE SOFTWARE, REFERENCE MATERIALS, OR ACCOMPANYING DOCUMENTATION, HOWEVER CAUSED AND ON ANY THEORY OF LIABILITY. THIS LIMITATION WILL APPLY EVEN IF CITRIX, ITS AFFILIATES, SUPPLIERS, OR AUTHORIZED DISTRIBUTORS HAVE BEEN ADVISED OF THE POSSIBILITY OF SUCH DAMAGES. IN NO EVENT SHALL THE LIABILITY OF CITRIX, ITS AFFILIATES, SUPPLIERS, OR AUTHORIZED DISTRIBUTORS EXCEED THE AMOUNT PAID FOR THE LICENSED SOFTWARE AT ISSUE. YOU ACKNOWLEDGE THAT THE LICENSE FEE REFLECTS THIS ALLOCATION OF RISK. SOME JURISDICTIONS DO NOT ALLOW THE LIMITATION OR EXCLUSION OF LIABILITY FOR INCIDENTAL OR CONSEQUENTIAL DAMAGES, SO THE ABOVE LIMITATION OR EXCLUSION MAY NOT APPLY TO YOU. For purposes of this Agreement, the term "CITRIX AFFILIATE" shall mean any legal entity fifty percent (50%) or more of the voting interests in which are owned directly or indirectly by Citrix Systems, Inc. Affiliates, suppliers, and authorized distributors are intended to be third-party beneficiaries of this AGREEMENT.

Export Restriction. You agree that you will not export or re-export the SOFTWARE in any form without the appropriate government licenses. Your failure to comply with this provision is a material breach of this AGREEMENT.

Termination. This AGREEMENT is effective until terminated. You may terminate this AGREEMENT at any time by removing the SOFTWARE from your computer and destroying all copies. Unauthorized copying of the SOFTWARE or the accompanying documentation or otherwise failing to comply with the terms and conditions of this AGREEMENT will result in automatic termination of this license and will make available to CITRIX other legal remedies. Upon termination of this AGREEMENT, the license granted herein will terminate and you must immediately destroy the SOFTWARE and accompanying documentation, and all back-up copies thereof.

Government End-Users. If you are a U.S. Government agency, in accordance with Section 12.212 of the Federal Acquisition Regulation (48 CFR 12.212), you hereby acknowledge that use, duplication and disclosure of the SOFTWARE by the U.S. Government or any of its agencies is governed by, and subject to, all of the terms, conditions, restrictions and limitations set forth in this AGREEMENT. In the event that, for any reason, Section 12.212 is not applicable, you hereby acknowledge that use, duplication and disclosure of the SOFTWARE by U.S. Government agencies is subject to the Commercial Computer Software Restricted Rights clause at 48 CFR Section 52.227-19(c)(1) and (2), or the Rights in Technical Data and Computer Software clause at DFARS 252.227-7013, as applicable. Manufacturer is Citrix Systems, Inc., 851 West Cypress Creek Road, Fort Lauderdale, Florida, 33309.

If licensor is Citrix Systems, Inc., this AGREEMENT will be governed by the laws of the State of Florida without reference to conflict of laws principles and excluding the United Nations Convention on Contracts for the International Sale of Goods, and in any dispute arising out of this AGREEMENT, you consent to the exclusive personal jurisdiction and venue in the State and Federal courts within Broward County, Florida. If licensor is Citrix Systems International GmbH, this AGREEMENT will be governed by the laws of Switzerland without reference to the conflict of laws principles, and excluding the United Nations Convention on Contracts for the International Sale of Goods, and in any dispute arising out of this AGREEMENT, you consent to the exclusive personal jurisdiction and venue of the competent courts in the Canton of Zurich.

Should you have any questions concerning this AGREEMENT, or wish to contact licensor for any reason, please write to licensor at the following address: Citrix Systems, Inc., Customer Service, 851 West Cypress Creek Road, Ft. Lauderdale, Florida 33309; or Citrix Systems International GmbH, Rheinweg 9, CH-8200 Schaffhausen, Switzerland.

Citrix is a registered trademark of Citrix Systems, Inc., in the U.S. and other countries. Microsoft and Windows are registered trademarks of Microsoft Corporation in the U.S. and other countries. UNIX is a registered trademark of The Open Group in the U.S. and other countries.

